

OKLAHOMA

LAND BOUNTY

EXPLORE OKLAHOMA'S GREENER PASTURES

U-PICK PRODUCE / MAZES
FARMERS MARKETS
SPECIALTY CROPS




OKLAHOMA'S
GROWING
ADVENTURE


OKLAHOMA
TRAVELOK.COM

AGRITOURISM ICONS

The icons below were created to help you identify your destination's primary service offering and other secondary activities that are available at agritourism locations across Oklahoma.

CATEGORIES



COUNTRY STAYS



GUEST RANCHES



EXOTIC BREEDS



FARM & RANCH
ATTRACTIONS



FARMERS MARKETS



TRAIL RIDING



HUNTING



MAZES



PUMPKIN PICKING



SPECIALTY CROPS
& PRODUCTS



U-PICK



VINEYARDS & WINERIES



TEACHABLE MOMENTS



WEDDINGS

ADDITIONAL ACTIVITIES



CAMPFIRES & PICNICS



FAMILY REUNIONS



BIRDING TOURS



DAIRIES



PARTICIPATING IN
FARM ACTIVITIES



GROUP TOURS



MEETING FACILITIES



CAMPING TRIPS



WAGON RIDES



WILDLIFE WATCHING/
PHOTOGRAPHY



FISHING



SKEET SHOOTING



HAYRIDES

AGRICULTURE IS OKLAHOMA'S LEGACY.

OKLAHOMA AGRITOURISM IS YOUR GUIDE.

Farms, ranches and vineyards across Oklahoma are opening their gates, barn doors and fences, issuing a heartfelt invitation to sample the abundant bounty and natural beauty found in the state's growing adventure – Agritourism. Use this guide to find ranches, museums, trails and more.

Did you know there are more than 60,000 farms and ranches in Oklahoma?



MAKE HAY WHILE THE SUN SHINES



When Oklahoma achieved statehood in 1907, the area already was home to more than 60,000 farms, producing the crops that kept life going. Today, the legacy continues. Get a glimpse into what life is like for a modern farmer, and enjoy fresh produce and more as you explore Oklahoma's abundant natural bounty.

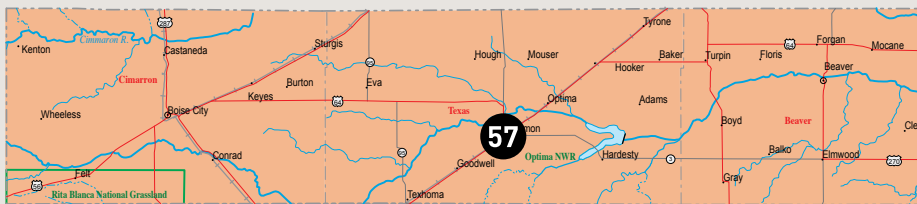
A

B

C

D

E



OKLAHOMA

AGRITOURISM MAP

STATE REGIONS

NORTHWEST

SOUTHWEST

CENTRAL


NORTHEAST

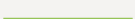
SOUTH CENTRAL

SOUTHEAST

MAP SYMBOLS

 INTERSTATE HIGHWAY

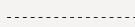
 STATE ROADS

 TOLLWAY

 RESERVOIR, LAKE

 RIVER

 RAILROADS

 COUNTY BOUNDARIES

0 10 Miles 25 Miles 50 Miles
0 10 KM 25 KM 50 KM



OKLAHOMA'S GROWING ADVENTURE

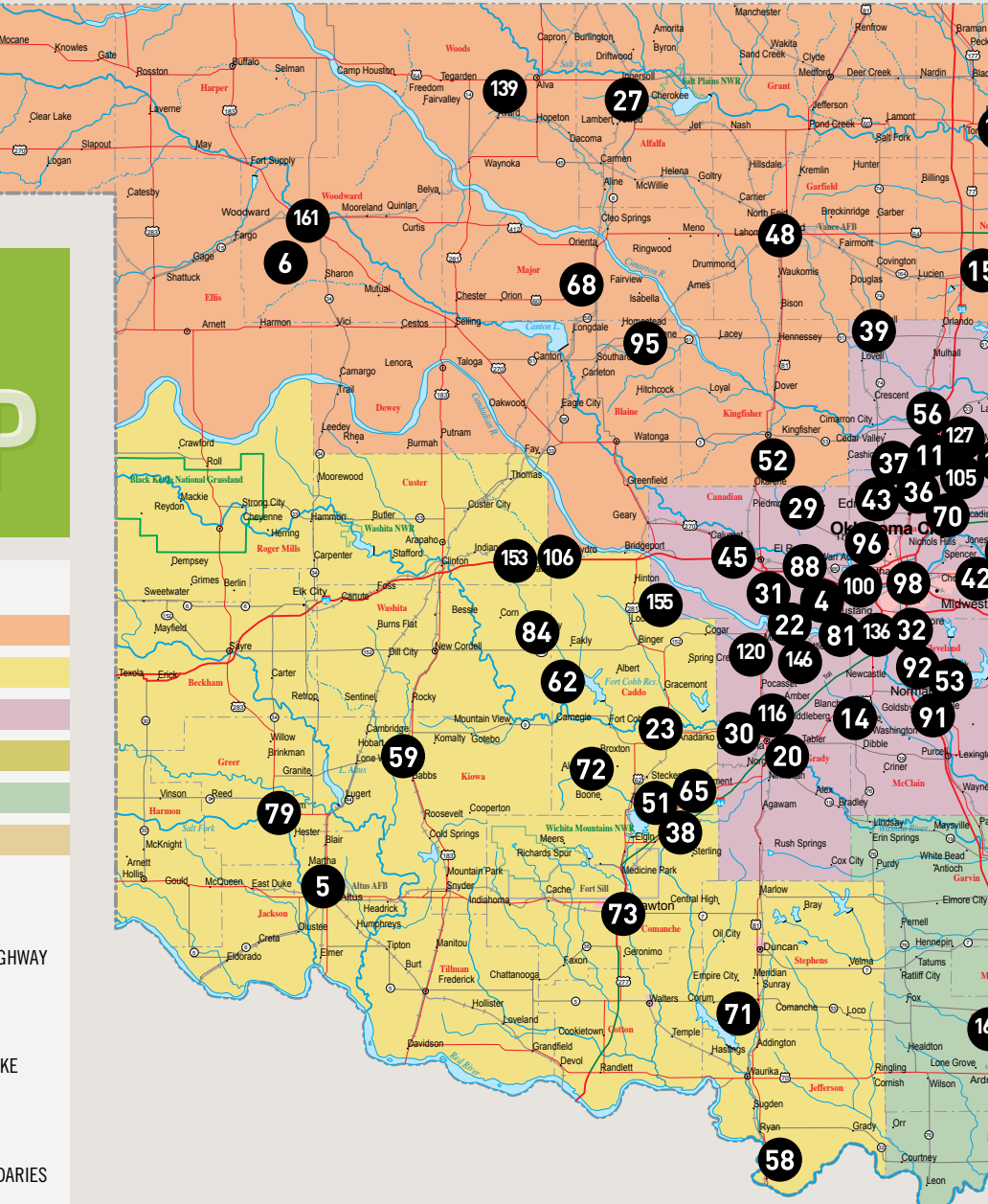
A

B

C

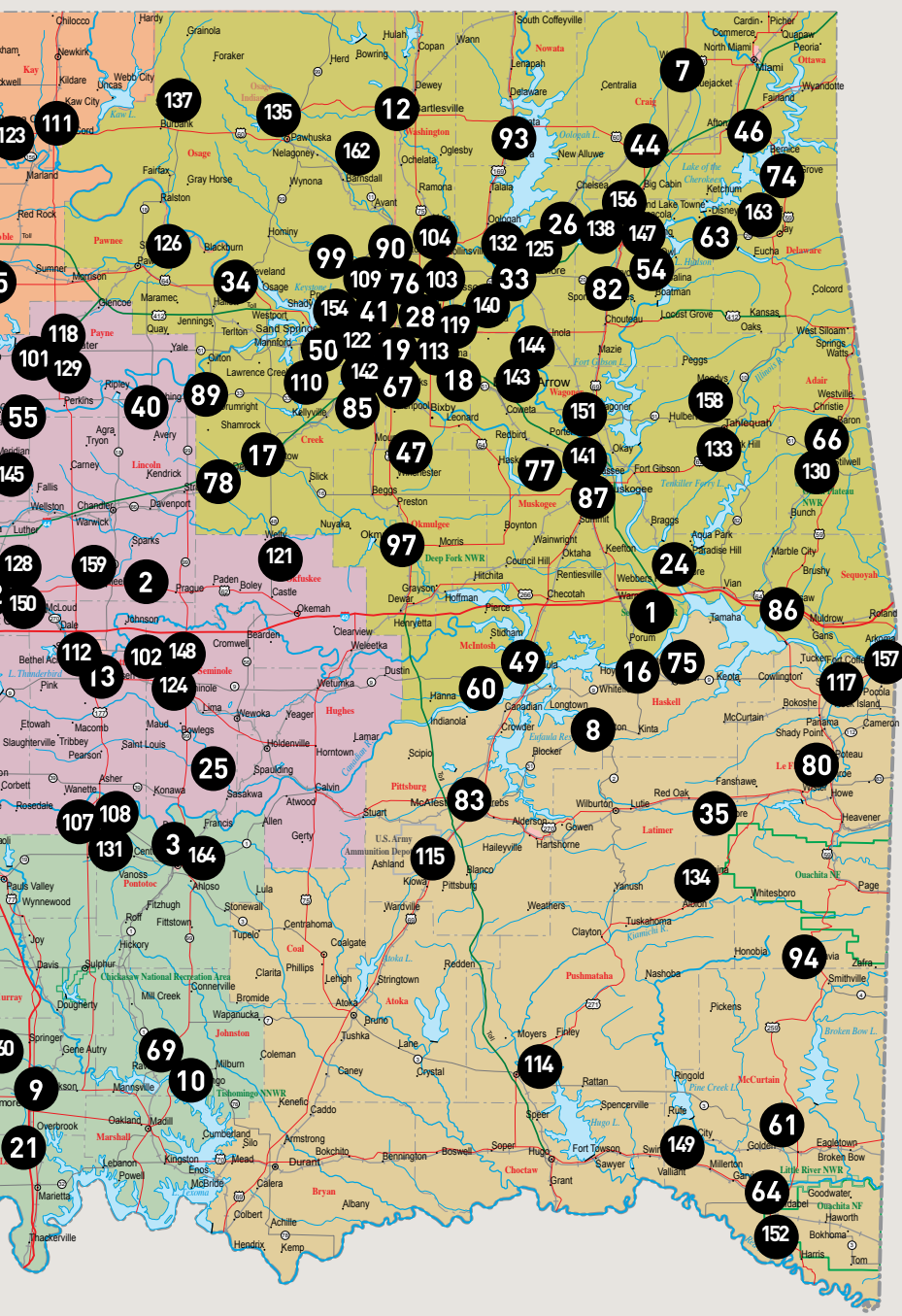
D

E



GHWAY
KE
DARIES

Miles
▲
N



1
2
3
4
5
6
7
8



TEACHABLE MOMENTS

Helping kids discover Oklahoma is easier than ever. Visit OklahomaAgritourism.com, select "traveler" and click on the "Teachable Moments" icon for Agritourism field trip ideas and more.



THE SPUR OF THE MOMENT

With more than 160 attractions spread across the state, you can act on your impulse to celebrate the season and get in touch with nature – literally!



U-PICK

U-PICK

Locally grown, fresh-picked harvestables offer guests one of life's sweet indulgences. From touring pumpkin patches to picking deliciously fresh blackberries, there's plenty of farm-fresh fun for everyone.



PUMPKIN PICKING

PUMPKIN PICKING

Oklahoma is home to many farms, all of which grow beautiful, delicious produce. Join in on the fall festivities by finding and picking your own pumpkin for Halloween right from an Oklahoma farm.



MAZES

MAZES

Wind your way through the many twists, turns and decision points en route to the finish line of Oklahoma farms' famous corn and hay mazes. Challenge fellow guests to an a-MAZE-ing race!



SPECIALTY CROPS
& PRODUCTS

SPECIALTY CROPS

Discover opportunities to pick and cut crops you just can't find in a grocery store. From pecan-picking to cutting down your own Christmas tree, there is always something different for agri-adventurers to explore.



EXOTIC BREEDS

EXOTICS

The native and exotic wildlife that roams Oklahoma offers visitors the perfect opportunity for learning. Many farms also offer the opportunity to purchase fibers and byproducts.



FARMERS MARKETS

FARMERS MARKETS

If you are looking to explore the products grown right from Oklahoma's soil, look no further. Local farmers markets offer delicious, well-nurtured produce, farm-fresh eggs, even products unique to the beautiful Oklahoma landscape. One thing just about all locavores agree on is that fresh produce packs a wallop for optimizing taste and nutrition.

SWEEP THE PLAINS

Discover your land bounty adventure using this handy reference.

- Find attractions near you on the fold-out map in the back.
- Read descriptions of land bounty attractions, listed alphabetically.
- The map and descriptions use a corresponding number system for cross-referencing.
- Plan your trip at OklahomaAgritourism.com. While you're there, use our custom itinerary builder, sign up for the Agritourist newsletter, connect with us and check for events on Facebook.



SOUTHEAST

1. 360 Farms

From I-40: Take Exit 284 (Ross Road) south for 2.3 miles. Turn off blacktop @ sharp right curve. Turn east (left) on gravel road CR 213 for 0.7 miles. Turn south (right) on CR 115 for 0.6 miles. The farm is on the L.

360 FARMS is a family owned and operated enterprise. We're proud to say that four generations of our family have worked this land. The name, 360 FARMS, denotes our life coming full circle after many years and many detours. We're part of that growing community who understand that well-grown food tastes better and good nutrition offers great health benefits. We work hard to provide the very best in agricultural products from our farm. 360 Farms offers only the best in elderberry plants, along with products from both the berries and flowers of our 8,000-plant elderberry orchard.

www.360okfarms.com



LAT/LONG:

35.44175, -95.18538

**Webbers Falls, OK
74470**

918-464-2505



CENTRAL

2. 3-Creeks Ranch

In Meeker: From the 4-way stop, go E. 7 mi. on Hwy. 62 to 3500 Rd. Turn R. (S.) for 0.7 mi. & then turn R. (W.) for 0.3 mi. Farm will be on the R. Look for the barns with red roofs. From Prague: Take Hwy. 62 W. 5 mi. to 3500 Rd. Turn L. (S.) for 0.7 mi. & turn R. (W.) for 0.3 mi. Farm is on the R.

3-Creeks Ranch is a great place for relaxing in the country and seeing the farm, including goats, cattle, chickens, a vineyard and a blackberry patch.

www.3-creeks.com



LAT/LONG:

35.49216, -96.77768

349776 E. 1050 Rd.

Prague, OK 74864

405-567-8603



SOUTH CENTRAL

3. Ada Farmers Market

In Ada: located at the intersection of 12th & Townsend.

Ada Farmers Market offers a wide array of fresh fruits and vegetables, along with plant materials. Whether you are looking for delicious produce, salad greens, herbs, honey, watermelons, peaches, farm-fresh eggs, meat items, cut flowers or quality Made in Oklahoma products, you must explore this seasonal, open-air market! Open 6 a.m. to 2 p.m. Wed. and Sat., April through November.



LAT/LONG:

34.77355576,

-96.68011052

12th & Townsend

Ada, OK 74820

580-436-1600



CENTRAL

4. All Pine Products

From OKC: Take I-40 W. to Exit 138 (Hwy. 4) Mustang Rd. Go S. 2 mi. Located on the W. side of the rd. between SW 15th & SW 29th.

Choose and cut Christmas trees, Virginia pines and wreaths. Free tree-stand drilling, shaking, wrapping, loading and tying to your vehicle, along with coloring books and candy canes for the kids. Open during the Christmas season; 3-6 p.m. Mon. to Fri., 10 a.m. to 6 p.m. Sat. and Sun.



LAT/LONG:

35.45298261,

-97.72498266

2205 S. Mustang Rd.

Yukon, OK 73099

405-820-5666,

405-324-1010



SOUTHWEST

5. Altus Farmers Market

In Altus: NE side of the Altus Plaza Shopping Center – 1100 N. Main St.

Altus Farmers Market offers a wide array of fresh fruits and vegetables, along with plant materials. Whether you are looking for delicious produce, salad greens, herbs, honey, watermelons, peaches, farm-fresh eggs, meat items, cut flowers or quality Made in Oklahoma products, you must explore this seasonal, open-air market! Open from May to Oct., 4-8:30 p.m. Tues. and Fri.



Altus, OK 73521
580-482-0823,
580-471-2709



NORTHWEST

6. Anichini-Moore Ranch & Farm

From the W., take Hwy. 15 into Woodward to 34th St. Turn S. on 34th St. & go S. 6 mi. to EW46. On EW46, turn W. & go 1 mi. to NS200. On NS200, turn S. & go 0.5 mi. Farm is on the E. side of the rd.

Sustainable farm offers group tours, wildlife- and bird-watching, stargazing, viewing of endangered/unusual livestock, learning how to grow herbs, produce, and knowledge about natural farming practices in Oklahoma. Ecologically grown produce, heritage fruits, vegetables, grass-fed beef, pork and lamb available. By appointment only.

www.anichinimoore.com



LAT/LONG:
36.3402354,
-99.44359199
Woodward, OK 73801
580-256-0657,
405-823-8295



NORTHEAST

7. Annabelle's Fun Farm

From Welch: Take Hwy. 10 1 mi. E. Turn S. at Bluejacket Rd./4450 Rd. Go 1 mi. and turn W. on Rd. 110 for 0.5 mi. The farm is on the N. side of the road. You can't miss the red barn.

Annabelle's is a family-owned fun farm. We offer a pumpkin patch, a hay maze, a petting zoo, corn mazes and tractor-pulled hay rides. Open fall, Christmas and Easter. Parties can be scheduled by appointment.

www.annabellesfunfarm.com



LAT/LONG:
36.85939, -95.07892
444606 E. 110 Rd.
Welch, OK 74369
918-323-6352



SOUTHEAST

8. Apple Hollow

Located 0.25 mi. N. of Quinton on Hwy. 71.

Enjoy the quiet country atmosphere at a unique shop with apple-inspired gift items, homemade jams/jellies, beeswax candles, scented soaps, and famous homemade fried apple and other fruit pies. Limited quantities are made daily; however, advance pie orders can be arranged. Gift shop, tour bus parking and advance group reservations are required.



LAT/LONG:
35.13176007,
-95.38009064
Quinton, OK 74561
918-469-2913



SOUTH CENTRAL

9. Ardmore Market Place on Broadway

Located at 106 E. Broadway St. in Ardmore.

The Market Place on Broadway Farmers Market in Ardmore offers a wide array of fresh fruits and vegetables, along with plant materials. Whether you are looking for delicious produce, salad greens, herbs, honey, watermelons, peaches, farm-fresh eggs, meat items, cut flowers or quality Made in Oklahoma products, you must explore this seasonal, open-air market! Open 7:30 a.m. to noon Wed. and Sat., April through December. www.chamber.ardmore.org/farmersmarket.php



LAT/LONG:
34.17382, -97.12663
106 E. Broadway St.
Ardmore, OK 73401
405-207-6515



SOUTH CENTRAL

10. Baker's Acres – Baker Pecans

Located 1.5 mi. S. on S. Muldrow Rd off E. Main in Tishomingo.

Pecan cracking and shelling plant with a retail store. Sells a variety of candies, jam and gift baskets. Home of the Baker's Acres pumpkin patch & corn maze. Also features an on-farm market selling a variety of fruits and vegetables. Call for days/hours of operations or to make reservations for groups. www.bakerpecans.com



LAT/LONG:
34.21317611,
-96.6689061
11250 S. Muldrow Rd.
Tishomingo, OK 73460
580-371-5228,
580-371-3529



CENTRAL

11. Bamboo Satori

Call for driving directions.

Come walk through gardens that contain more than 35 varieties of bamboo. Tours are available by appointment only. Live bamboo plants and cane poles are available for sale. www.bamboosatori.com



LAT/LONG:
35.77208, -97.3601
10324 Cranberry Rd.
Guthrie, OK 73044
405-590-0179



NORTHEAST

12. Bartlesville Farmers Market

Held at Frank Phillips Park, located at the corner of Keeler & Frank Phillips Blvd. in downtown Bartlesville.

Bartlesville Farmers Market offers a wide array of fresh fruits and vegetables, along with plant materials. Whether you are looking for delicious produce, salad greens, herbs, honey, watermelons, peaches, farm-fresh eggs, meat items, cut flowers or quality Made in Oklahoma products, you must explore this seasonal, open-air market! Located at Frank Phillips Blvd. and Keeler. Open 8-11:30 a.m. May through Oct. www.bartlesvillefarmersmarket.com



LAT/LONG:
36.75160225,
-95.97907517
Bartlesville, OK 74005
918-914-3791



CENTRAL

13. Benson Park Pecans

Historic grounds of Benson Park Pecans, equipped with updated pecan equipment. Orchard and plant tours for school groups, church groups, senior citizens offered. Features a gift shop with sampling of pecans and pecan candy. Call for reservations and availability. Open 9 a.m. to 6 p.m. Mon. to Sat., mid-Oct. through Feb. 14.
www.bensonparkpecans.com



LAT/LONG:
35.28972162,
-96.91959957
41502 Benson Park Rd.
Shawnee, OK 74801
405-273-1235



CENTRAL

14. Blanchard Farmers Market

In Blanchard: Ace Hardware parking lot, 987 E. Veterans Memorial Hwy.

Blanchard Farmers Market offers a wide array of fresh fruits and vegetables, along with plant materials. Whether you are looking for delicious produce, salad greens, herbs, honey, watermelons, peaches, farm-fresh eggs, meat items, cut flowers or quality Made in Oklahoma products, you must explore this seasonal, open-air market! Open 7:30 a.m. to noon Sat., May to Sept.
www.facebook.com/BFMarket



LAT/LONG:
35.14417, -97.6455
987 E. Veterans
Memorial Highway
Blanchard, OK 73010
405-485-2943



NORTHWEST

15. Bolay Pumpkin Patch

Located 3 mi. E. of Perry on Hwy. 64. The pumpkin patch is on the S. side of the rd.

The Bolay Pumpkin Patch is a U-Pick pumpkin patch that offers a variety of jack-o'-lanterns and specialty pumpkins – a great place to find your fall decorations! There is no admission. Beginning Oct. 1, the patch is open 5-7 p.m. Tues./Thurs., 10 a.m. to 7 p.m. Sat. and 1-7 p.m. Sun.



LAT/LONG:
36.28960584,
-97.22828584
14050 John Wayne
Perry, OK 73077
580-336-2350



NORTHEAST

16. BriarPatch Winery

From I-40: Take the exit for Warner/Porum. Go S. on Hwy. 2 for 14 mi. Look for the winery and pecan signs on the L. (E.) side of the road.

BriarPatch Winery specializes in farm wines, made from local fruit and berries such as blackberry and strawberry. The winery is open for tastings and parties. Catering is available. Wines are seasonally available, as are pecans. BriarPatch Winery also is home to miniature donkeys for the kids to pet. Group tours available by appointment.

www.facebook.com/BriarPatchWinery



LAT/LONG:
35.28611, -95.23852
32574 S. Oklahoma 2
Porum, OK 74455
918-448-5156,
918-484-2463



NORTHEAST

17. Bristow Area Farmers Market

Held at the Tractor Supply Parking Lot on the corner of Hwy. 16 & Hwy. 66 in Bristow.

The Bristow Area Farmers Market has fresh produce, meat, eggs and other locally grown and made products.



LAT/LONG:

35.84066, -96.39198

Bristow, OK 74010

918-935-5380



NORTHEAST

18. Broken Arrow Rose District Farmers Market

Exit Hwy. 51 at Elm exit. Elm S. to Kenosha. E. on Kenosha approx. 0.5 mi. to Main St., S. on Main 0.75 mi. to market.

Broken Arrow Rose District Farmers Market offers a wide array of fresh fruits and vegetables, along with plant materials. Whether you are looking for delicious produce, salad greens, herbs, honey, watermelons, peaches, farm-fresh eggs, meat items, cut flowers or quality Made in Oklahoma products, you must explore this seasonal, open-air market! Open 8 a.m. to noon Sat., April 20 to Sept. 7.

www.brokenarrowok.gov



LAT/LONG:

36.04877995,

-95.79097584

418 S. Main St.

Broken Arrow, OK 74012

918-259-2400, ext. 5430

918-259-OKRA (6572)



NORTHEAST

19. Brookside Farmers Market

In Tulsa: Located at the corner of 41st & Peoria (NE corner of the intersection) in the Whole Foods parking lot.

Seasonal farmers market providing the best local and organic produce, plants, herbs, baked goods, eggs, cheeses, meats, garden crafts, music and fun! Open 8 a.m. to noon Wed., May through Oct.

www.cherrystreetfarmersmarket.com



LAT/LONG:

36.10455147,

-95.97600562

41st & S. Peoria

Tulsa, OK 74170

918-789-3881



CENTRAL

20. Brown Farm and Garden LLC

From OKC: Take I-44 W. on the H. E. Bailey/Turner Turnpike toward Chickasha. Take the first Chickasha exit & go E. on Hwy. 92/Hwy. 9 for 2.5 mi. to CS 2880. Go N. (L.) on CS 2880 2.25 mi.

Come enjoy our 42-acre pumpkin patch and garden! Pumpkins of all sizes are available. 5K events are available in the spring and fall. We offer wholesale pumpkins.

www.brownsfarmandgarden.com



LAT/LONG:

35.07498, -97.8643

2185 CS 2880

Chickasha, OK 73081

405-222-9025



SOUTH CENTRAL

21. Brown Ranch Hay Maze

Exit 24 off I-35 (7 mi. S. of Ardmore) & go 0.25 mi. E. to Hwy. 77, 2 mi. S. on Hwy. 77. Located on the W. side of Hwy. 77.

Eat, play and enjoy fall fun. The maze is redesigned each year and constructed from more than half a million pounds of ROUND BALE hay! Activities include a hay slide, a 3-story hay castle and a corny gold mine. Call for hours. Large groups by reservation only.

www.brownranchhaymaze.com



LAT/LONG:

34.04174, -97.14361
U.S. 77 & Hickory Creek
Overbrook, OK 73453
580-465-7937



CENTRAL

22. Buffalo Creek Berry Farm

From I-40 and Morgan Rd., Go S. to SW 89th and Morgan. Turn E. for 0.5 mi. to Sloan Rd. Farm is on the S. side of the rd.

Buffalo Creek Berry Farm is a pick-your-own, family-owned farm. We produce thornless blackberries, raspberries (red and black) and strawberries, as well as a wide variety of vegetables.



LAT/LONG:

35.37538, -97.68026
9211 Sloan Rd.
Mustang, OK 73064
405-412-4515



SOUTHWEST

23. Caddo County Farmers Market

In Anadarko. Located at the intersection of Central and 2nd.

Caddo County Farmers Market offers a wide array of fresh fruits and vegetables, along with plant materials. Whether you are looking for delicious produce, salad greens, herbs, honey, watermelons, peaches, farm-fresh eggs, meat items, cut flowers or quality Made in Oklahoma products, you must explore this seasonal, open-air market! Open 8 a.m. to 1 p.m. Tues. and Fri., June to Sept.

www.oces.okstate.edu/caddo/caddo-county-farmers-market



LAT/LONG:

35.06982525,
-98.25125634
110 W. Central Blvd.
Anadarko, OK 73005
405-247-3376



NORTHEAST

24. Calzoma Christmas Tree and Chrysanthemum Farm

I-40 to Hwy. 100 (Webber's Falls/Gore exit). Go over the Arkansas River Bridge to Gore & turn onto Hwy. 10 N. (at Harp's Grocery Store). Follow signs & stay on Hwy. 10 for 2.8 miles. Farm is on the R.

Choose and cut Virginia pine, Leyland & Murray cypress and firs, plus chrysanthemums. Refreshments and children's activity area available. Chrysanthemums available Sat./Sun., Sept. to Oct. Christmas trees available 3:45 p.m. to dark Mon. to Fri.; 9 a.m. to dark Sat./Sun., or by appointment; Thanksgiving Fri. to Dec. 23 only.

www.okchristmastrees.com



LAT/LONG:

35.56079198,
-95.13799175
Gore, OK 74435
918-489-2876



CENTRAL

25. Carrie's Berries

From Wewoka: at the intersection of Hwy. 56 & Hwy. 270, go S. on Hwy. 56 about 7.1 mi. Watch for the communication tower on the L. (E.) Immediately after the tower, turn R. (W.) on gravel road EW 137, go straight to NS 364 & turn L. (S.) Carrie's Berries is located about 1.5 mi. on the R.

Family owned U-Pick thornless blackberry farm offering three varieties. Picking buckets provided, or bring your own. Pick extra to make pies, cobbler jams and jellies. Open 7 a.m. to 1 p.m. Mon., Thurs. and Fri., and 2-5 p.m. Sat., June through Sept.



LAT/LONG:

35.00796, -96.52872
13841 N. 364 Rd.
Holdenville, OK 74848
405-941-4142,
405-941-3929



NORTHEAST

26. Celtic Farms

Rt. 66 to Hwy. 28A, drive E. Farm is the fifth driveway on the L. after the flashing traffic light.

Fall harvest with Halloween activities. Farm stand with fresh farm produce, canned goods, natural-grown beef, pork, chicken, goat and lamb meat. Natural goats' milk soaps, firewood and live animals also for sale.



LAT/LONG:

36.43779, -95.46415
20401 E. Oklahoma 28A
Chelsea, OK 74016
918-283-1801



NORTHWEST

27. Cherokee Farmers Market

Located at armory building at 2nd and Kansas.

Cherokee Farmers Market offers a wide array of fresh fruits and vegetables, along with plant materials. Whether you are looking for delicious produce, salad greens, herbs, honey, watermelons, peaches, farm-fresh eggs, meat items, cut flowers or quality Made in Oklahoma products, you must explore this seasonal, open-air market! Open 4-7 p.m. Thurs., June to Oct.



LAT/LONG:

36.7556, -98.35676
Cherokee, OK 73728
580-596-6111



NORTHEAST

28. Cherry Street Farmers Market

In Tulsa: On 15th, between Quaker & Rockford.

Seasonal farmers market providing the best local and organic produce, plants, herbs, baked goods, eggs, cheeses, meats, garden crafts, music and fun! Open 7-11 a.m. Sat., April to Oct.

www.cherrystreetfarmersmarket.com



LAT/LONG:

36.14055694,
-95.58302
Tulsa, OK 74170
918-789-3881,
918-691-8417



CENTRAL

29. Chester's Party Barn and Farm

Located 3 mi. N. of Hwy. 3 (Northwest Expressway) & Cimarron Rd. Watch for the signs.

Open for birthday parties, school field trips, day cares, church groups and corporate picnics, with some special events open to the public. Activities include pony rides, a petting zoo, inflatables, mazes, horseshoes and sack races. The annual Pumpkin Patch & Mystery Maze is open to public in October. Call for hours.

www.chesterspartybarn.com



LAT/LONG:

35.68424557,
-97.81617032

5201 Cimarron Rd.
Piedmont, OK 73078
405-373-1595



CENTRAL

30. Chickasha Farmers Market

Located at the southwest corner of 7th & Chickasha.

Chickasha Farmers Market offers a wide array of fresh fruits and vegetables, along with plant materials. Whether you are looking for delicious produce, salad greens, herbs, honey, watermelons, peaches, farm-fresh eggs, meat items, cut flowers or quality Made in Oklahoma products, you must explore this seasonal, open-air market! The market provides the public an opportunity to buy fresh produce and products while supporting the local economy. Vendors are committed to raising high-quality produce with premium taste and maximum freshness. Open 7 a.m. to noon Tues. and Sat., May to Oct.

www.facebook.com/chickashafarmersmarket



LAT/LONG:

35.05108152,
-97.9419127

7th St. & Chickasha Ave.
Chickasha, OK 73018
405-224-2216



CENTRAL

31. Cimarron Fields Country Farm Market

I-40 W. to the Cimarron Rd. exit – turn S. on Cimarron Rd. & go 6.5 mi.; Facility on E. side of rd.

Cimarron Fields Country Farm Market is an on-the-farm market that sells all-natural fresh vegetables and other farm products. Come experience the warm hospitality of Drs. Stan and Lisa Horn, previous cattle and wheat producers turned vegetable farmers! This market experience is an opportunity to not only purchase wholesome produce, beef, pork, lamb and eggs directly from the grower, but also have a really fun time on their farm while buying it!



LAT/LONG:

35.41424, -97.81291
5120 S. Cimarron Rd.
Yukon, OK 73099
405-802-8135



CENTRAL

32. City of Moore Farmers Market

Located at the Moore Community Center, 301 S. Howard.

The City of Moore Farmers Market offers a wide array of fresh fruits and vegetables, along with plant materials. Whether you are looking for delicious produce, salad greens, herbs, honey, watermelons, peaches, farm-fresh eggs, meat items, cut flowers or quality Made in Oklahoma products, you must explore this seasonal, open-air market! Open 4-7 p.m. Thurs. and 8 a.m. to noon Sat., May to Aug.

www.cityofmoore.com/community/farmers_market



LAT/LONG:

35.33509264,
-97.48868369
301 S. Howard Ave.
Moore, OK 73160
405-793-4332



NORTHEAST

33. Claremore Farmers Market

Located at the Expo Center, 400 Veterans Pkwy., in the NE corner of the parking lot.

Claremore Farmers Market offers a wide array of fresh fruits and vegetables, along with plant materials. Whether you are looking for delicious produce, salad greens, herbs, honey, watermelons, peaches, farm-fresh eggs, meat items, cut flowers or quality Made in Oklahoma products, you must explore this seasonal, open-air market! Open 7 a.m. to noon Sat., May to Oct., and 7 a.m. to noon Wed., July to Aug.



LAT/LONG:

36.3144, -95.6309
400 Veterans Parkway
Claremore, OK 74017
918-812-1987



NORTHEAST

34. Cleveland Farmers Market

In Cleveland: Downtown, next to City Hall.

Cleveland Farmers Market offers a wide array of fresh fruits and vegetables, along with plant materials. Whether you are looking for delicious produce, salad greens, herbs, honey, watermelons, peaches, farm-fresh eggs, meat items, cut flowers or quality Made in Oklahoma products, you must explore this seasonal, open-air market! Open 8-11 a.m. Sat., June to Oct.

www.chamberofclevelandok.com



LAT/LONG:

36.30999714,
-96.46301891
101 E. Pawnee St.
Cleveland, OK 74020
918-358-2131



SOUTHEAST

35. Creekside Berry Farm

1 mi. W. of LeFlore on SE 110 Rd. (Salonia Rd). First drive on the L. past the Indian Loop.

Creekside Berry Farm is a family-owned-and-operated U-Pick farm. We offer several varieties of blueberries, a limited supply of blackberries and raspberries, and vegetables in season. Located 15 miles from the west end of the Talimena Drive.

www.creeksideberryfarm.com



LAT/LONG:

34.89843, -94.99981
17881 SE 110 Rd.
Red Oak, OK 74563
918-448-8387



CENTRAL

36. Crestview Inc. Farms

Go N. on I-35 to Exit 143 (Covell). Go E. on Covell to Douglas. Go N. on Douglas to Sorghum Mills Rd. The farm sits on the NW corner of Sorghum Mill Rd. & Douglas Blvd.

Dedicated to organic and high-quality gardening practices. Shop for a vast variety seasonal produce, fresh herbs, herb plants, vegetable plants and U-Pick blackberries. Call ahead for availability.

www.crestvieworganicfarms.net



LAT/LONG:

35.71201847,
-97.37172585
5521 N. Douglas Blvd.
Arcadia, OK 73007
405-823-2430



CENTRAL

37. Cripple Creek Farms

Follow I-35 N. to Waterloo Rd. Go W. on Waterloo Rd. to Broadway. Go N. on Broadway 3.2 mi. The farm sits on the W. side of the rd.

Watch honey being bottled, hunt for the queen bee in observation hives, or put on a bee suit and experience the thrill of inspecting a working beehive. Stroll through the produce garden and pick fresh vegetables, or just relax and let the stress of the city melt away.

www.cripplecreekfarms.net



LAT/LONG:
35.77202964,
-97.4798303
250 Cripple Creek Dr.
Guthrie, OK 73044
405-590-2562



SOUTHWEST

38. D & L Christmas Tree Farm

From Main St. in Fletcher: go to Cole Ave. Cole Ave. will form a "T" on Rieck Rd. Turn S. on Rieck Rd., go 0.7 mi. to Watts Rd., turn E. on Watts Rd. & go 1.7 mi. The farm sits on the N. side of the rd.

From I-44 (The H. E. Bailey Turnpike): take Exit 62. At the stop sign, turn S. Go 1.6 mi. on NE 180th St. Turn W. on N. Dr., go 3.0 mi. & turn S. on Sycamore Rd. (Sycamore Rd. turns into Rieck Rd.) Go 0.8 mi. to Watts Rd.; turn E. & go 1.7 mi. to the farm, located on the N. side of the rd.

Choose-and-cut Christmas tree farm specializing in Oklahoma-grown noble, grand, fir and Fraser fir trees. Wreaths and pre-cut trees also available. Open 1-5 p.m. Sun. to Fri. and 10 a.m. to 5:30 p.m. Sat., Thanksgiving to Christmas Eve.



LAT/LONG:
34.8117282,
-98.1995279
Fletcher, OK 73541
580-549-6994



NORTHWEST

39. DaZe in a MaZe

Located 2 mi. N. of Hwy. 51 & Hwy. 74 jct.

Mazes geared to everyone, from the very young to the very young at heart. For toddlers, indoor square-bale maze; for everyone, large corn and themed hay maze; for the brave, the difficult and dark jungle maze. Select a pumpkin, take hay-rack rides, feed and pet farm animals, have a picnic, and enjoy the playground.

www.dazeinamaze.com



LAT/LONG:
36.14518, -97.58521
26048 N. Oklahoma 74
Marshall, OK 73056
580-234-6293



CENTRAL

40. Downtown Cushing Farmers Market

In Cushing: At the NW corner of Broadway & Cleveland.

Cushing Farmers Market offers a wide array of fresh fruits and vegetables, along with plant materials. Whether you are looking for delicious produce, salad greens, herbs, honey, watermelons, peaches, farm-fresh eggs, meat items, cut flowers or quality Made in Oklahoma products, you must explore this seasonal, open-air market! Open 1-6 p.m. Thurs., June to Oct.



LAT/LONG:
35.98018, -96.77285
104 W. Broadway St.
Cushing, OK 74023
918-225-3628



NORTHEAST

41. Downtown Tulsa Farmers Market

In Tulsa: Located at 3rd & Boston at Williams Green.

Located in unique canyon w/ live springs, host to a multitude of wildlife. Enjoy hiking, bird-watching & Native American writings on canyon walls, plus rest & relaxation. Dining room open on Fri./Sat. evenings only, reservations required. Cabins offer queen-size beds & kitchenettes.

www.facebook.com/pages/Downtown-Tulsa-Farmers-Market/294883800545158?fref=ts



LAT/LONG:

36.15405287,
-95.98991156
Tulsa, OK 74103
918-855-9125



CENTRAL

42. Eastern Oklahoma County Farmers Market

Located at Choctaw Creek Park, 2001 N. Harper St.

Eastern Oklahoma County Farmers Market offers a wide array of fresh fruits and vegetables, along with plant materials. Whether you are looking for delicious produce, salad greens, herbs, honey, watermelons, peaches, farm-fresh eggs, meat items, cut flowers or quality Made in Oklahoma products, you must explore this seasonal, open-air market! Open 8 a.m. to noon Sat., June to Oct.

www.choctawcity.org



LAT/LONG:

35.48509554,
-97.27405154
2001 N. Harper St.
Choctaw, OK 73020
405-390-8198



CENTRAL

43. Edmond Farmers Market

Located at the Festival Market Place on 1st St., just W. of Broadway in downtown Edmond. Take I-35 N. to Exit 141; go W. to Broadway; go N. 1 block to 1st St. Go 1 block W. Market is located on the S. side of the st., just before the railroad tracks.

The Edmond Farmers Market carries many Oklahoma-grown and -made items, including fresh produce, local honey, eggs, cut flowers, water garden plants, pies, pastries, pumpkins, fresh bakery items and black Angus beef! The market continues its diversity by offering custom wood products, fresh salsa, reusable bags, cookbooks, T-shirts, sauces, spices, and homemade soap and spa products. Open 8 a.m. to 1 p.m. Sat and Wed., mid-April through Oct., and 8 a.m. to 1 p.m. Wed., June 6 to Aug. 15.

www.edmondok.com/parks



LAT/LONG:

35.65365408,
-97.48303367
2nd & Broadway
Edmond, OK 73003
405-359-4630



NORTHEAST

44. Eileen's at Neer Farm LLC

From Route 66: Go W. at the historic Vinita Hotel approx. 3 mi. You will go over railroad tracks and continue N. as Canadian Ave. turns into S. 4390 Rd.

From I-44: Right after toll, R. at second light. At the next light (Rt. 2), turn L. for 2 mi. to S. 4390 Rd. and turn R. for 0.5 mi. We have signs at the corner and at the driveway entry.

A 500-plus-acre family farm raising three types of hay in rural northeast Oklahoma, just 3 miles west of Route 66 in Vinita. There are horses grazing, ducks and geese on the pond, an old stand of pecan trees and a 100-year-old barn used for special events. Scentables candles and Home Fragrance collection products are handmade and sold in the charming gift cottage featuring made-in-Oklahoma and made-in-USA gifts. A lovely garden with paths beckons you to relax and enjoy. Luncheons and private parties are available.



LAT/LONG:
36.664347, -95.179537
24254 S. 4390 Rd.
Vinita, OK 74301
918-244-6621



CENTRAL

45. El Reno Farmers Market

In El Reno: Go S. on Hwy. 81. Right before the first stop light on the W. side of the st., you will see Ross Feed & Seed Store. The market is directly N. of the Ross Feed & Seed store.

El Reno Farmers Market offers a wide array of fresh fruits and vegetables, along with plant materials. Whether you are looking for delicious produce, salad greens, herbs, honey, watermelons, peaches, farm-fresh eggs, meat items, cut flowers or quality Made in Oklahoma products, you must explore this seasonal, open-air market! Open 8 a.m. to noon Wed. and Sat., June to Sept.



LAT/LONG:
35.53331067,
-97.95561055
100 S. Choctaw Ave.
El Reno, OK 73036
405-262-8888



NORTHEAST

46. Emu Only

On I-44, take the Afton exit, then S. on Hwy. 59 to Grove. 3 mi. from Buffalo Ranch.

We only raise emu and have a retail store where we sell a variety of emu products, including oils, lotions, soaps, decorated eggs and leather products. Free admission, tour bus parking, guided tours. Open 10 a.m. to 6 p.m. Thurs. to Sat. Call ahead before you drive.



LAT/LONG:
36.68487, -94.89386
54801 E. U.S. 59
Afton, OK 74331
800-615-0618,
918-257-6015



NORTHEAST

47. Endicott Farms LLC

From Tulsa: Take Hwy. 75 S., turn E. (L.) on 181st St. S., then turn S. (R.) on Lewis Ave. Continue on Lewis until sharp L. curve at 211st. Travel E. approx. 0.25 mi. and the farm will be on the S. side of the road.

A family-friendly blueberry and blackberry U-Pick farm less than 30 minutes from Tulsa. The well-maintained berry field makes it an enjoyable experience for all ages. Diverse berry selection with nearly a dozen varieties available. Buckets and bags provided. Also, seasonal pecan production.

www.endicottfarms.com



LAT/LONG:

35.8566, -95.9561

Liberty, OK 74445

918-344-4582,

918-366-2443



NORTHWEST

48. Enid Farmers Market

In Enid: Located at the SE corner of Grand & Garriott in front of the train depot.

Enid Farmers Market offers a wide array of fresh fruits and vegetables, along with plant materials. Whether you are looking for delicious produce, salad greens, herbs, honey, watermelons, peaches, farm-fresh eggs, meat items, cut flowers or quality Made in Oklahoma products, you must explore this seasonal, open-air market! Open 8-11 a.m. Sat., May to Oct.

www.enidfarmersmarket.org



LAT/LONG:

36.39029952,

-97.87780566

Enid, OK 73703

580-977-4420



NORTHEAST

49. Eufaula Farmers Market

Located at the Eufaula Public Library, 0.5 block W. of Main St.

Seasonal farmers market offering locally grown fruits, vegetables, eggs and baked goods, as well as arts and crafts produced by local artisans. Open 8 a.m. to noon Tues. and Sat., Memorial Day to Sept.



LAT/LONG:

35.28432647,

-95.58322991

301 S. 1st St.

Eufaula, OK 74432

918-452-3648



NORTHEAST

50. Flying G Ranch

From the intersection of Hwy. 51 & Hwy. 97 in Sand Springs, go W. on Hwy. 51 for 5.5 mi. Ranch is located on the S. side of the hwy.

Working Polled Hereford cattle ranch with cattle for sale year round. Working pecan orchard with seasonal retail shop featuring a range of goodies. Open 9 a.m. to 6 p.m. Nov. 1 to Dec. 31, daily or otherwise by appointment.

www.flying-g-ranch.com



LAT/LONG:

36.13429643,

-96.20816716

19402 W. Oklahoma 51

Sand Springs, OK 74063

918-245-8854,

918-245-3316



SOUTHWEST

51. Forbidden Fruits Farm & Vineyards

From the N.: Take I-44 (H.E. Bailey Turnpike) to Exit 62 (Cyril/Fletcher exit). Head N. on Whitfield Rd. (L. at the end of the ramp). Whitfield Rd. will eventually turn W. and intersect with Rt. 277. Go S. (L.) on Rt. 277 for 1 mi. to E. 1480 Rd. Turn E. (L.) onto E. 1480 Rd. You will see the farm straight ahead. Total drive is about 10 minutes off the hwy.

From the S.: Take I-44 (H.E. Bailey Turnpike) to exit 53 (Elgin exit). Head E. (R.) on Rt. 277. Technically, you're on 277 N., but the road is going due E. at this point. Stay on 277, which turns N. When you pass the Comanche-Caddo County Line, about 6 miles, take the next R. (E.) on E. 1480 Rd. Farm is straight ahead. Total drive is 17 minutes off the hwy.

We raise cattle as if we were preparing them for our own table. All our beef is strictly grass-pastured. The cattle are raised humanely, in open fields with plenty of shade to break up the heat of the Oklahoma sun. We treat the land as our ancestors did. We have heirloom apples, peaches, plums, pears, nectarines, figs, Asian pears, jujube, both sweet and sour cherries, mulberries and plumcots, as well as a vineyard. Enjoy farm work days and learn about sustainable living from us!

www.forbiddenfruitsfarm.com



LAT/LONG:

34.86966, -98.21598
23200 County Rd. 1480
Cyril, OK 73029
405-757-7670



NORTHWEST

52. Frontier Farm

From Hwy. 81 & Hwy. 33 jct., go S. to 3rd stop light (Starlite Dr); go E. on Starlite Dr. 1.5 mi. to the first stop sign (Shaffenberg Rd.); go S. on Shaffenberg Rd. 0.75 mi. to farm on E. side of rd.

Come create family memories and celebrate the holidays! For Christmas, choose and cut your own Virginia or Scotch pine, or you can shop for fresh pre-cut Christmas trees including premium grade noble fir. We offer a seasonal gift shop where you can purchase fresh wreaths, swags, tree stands and many unique collectibles. We will shake, bale and load your Christmas tree into your car for your convenience. Hayrides available when weather permits. Free candy canes and coloring books for the kids! School field trips and group tours are available by appointment only. Special events are held all year long; call for details. Call for booking information for private events including birthday parties, church fellowships, family reunions and corporate picnics.

www.frontierfarm-ok.com



LAT/LONG:

35.81742, -97.90553
Kingfisher, OK 73750
405-368-8733



CENTRAL

53. Goddard Christmas Tree Farm

Exit I-35 at Robinson St. Go E. 7 mi. Plantation is on N. side of Robinson, 0.25 mi. E. of 48th St.

Choose and cut Scotch Pine, Virginia Pine, wreaths and greenery. Limited number of pre-cut imported firs. Please call ahead for hours of operation.

www.goddardchristmastreefarm.com



LAT/LONG:

35.23286242,
-97.36502017
5209 E. Robinson St.
Norman, OK 73026
405-364-0320



NORTHEAST

54. GraysLland Acres

From Pryor, go 2 mi. N. on Hwy. 69, turn E. on W. 470 Rd., go 6 mi. & turn N. on 438 Rd. for 1 mi. We are on E. side of the rd. Look for the cream-colored buildings with the red roof.

GraysLland Acres is a 20-acre milk goat and llama farm. May through September is our milking season; this is your chance to milk a goat. We have three varieties of goats: Nubians, Alpines and Lamanchas. Our llamas eat out of your hand, and if you are lucky, you might get a kiss from one. We have fresh milk you can try and soaps and lotions made from our goats' milk. Call to schedule a visit.

www.graysllandacres.com



LAT/LONG:

36.3503, -95.20236

2960 N. 438 Rd.

Pryor, OK 74361

918-825-1522,

918-373-3733



CENTRAL

55. Grider Farms

S. of Perkins on Hwy. 177 1 mi., turn W. on Vinco Rd. & go 5 mi. to Country Club Rd. Turn back N. It is the 1st house on the W. side of the rd.

Seasonal attraction for families and groups of all ages. Working cattle ranch and farm produces alfalfa hay, wheat, milo, soybeans, corn and grass hay. Explore 45 acres of pumpkins, assorted gourds and a 3-acre living hay maze. Hay rides and parties by appointment. Tour bus parking. Call for days/hours.



LAT/LONG:

35.94947, -97.12303

14500 S. Country

Club Rd.

Perkins, OK 74059

405-547-2722



CENTRAL

56. Guthrie Farmers Market

In Guthrie: On 1st, between Oklahoma & Harrison.

Guthrie Farmers Market offers a wide array of fresh fruits and vegetables, along with plant materials. Whether you are looking for delicious produce, salad greens, herbs, honey, watermelons, peaches, farm-fresh eggs, meat items, cut flowers or quality Made in Oklahoma products, you must explore this seasonal, open-air market! Open 8 a.m. to noon Sat., June through Sept.

www.guthrieok.com/farmersmarket.html



LAT/LONG:

35.87710918,

-97.42457317

Guthrie, OK 73044

405-282-1947,

405-699-1960



NORTHWEST

57. Guymon Farmers Market

In Guymon: Located at front of the court house on Main St.

Guymon Farmers Market offers a wide array of fresh fruits and vegetables, along with plant materials. Whether you are looking for delicious produce, salad greens, herbs, honey, watermelons, peaches, farm-fresh eggs, meat items, cut flowers or quality Made in Oklahoma products, you must explore this seasonal, open-air market! Open 8 a.m. to noon Sat., July to Sept.

www.mainstreetguymon.com



LAT/LONG:

36.68151, -101.48137

Guymon, OK 73942

580-338-6246



SOUTHWEST

58. Happy Day Farms Pumpkin Patch

From Terra: 2.5 mi. E. of Hwy. 81.

This working farm grows watermelons and pumpkins and offers educational presentations for schools and the general public. Come enjoy hayrides, a petting zoo, a giant tree house, pedal carts, pony rides, sand and corn boxes, a jumping pillow, duck races, bungee jumping, zip lining and much, much more. Enjoy one of Oklahoma's neatest Christmas hayrides, complete with music and lots of lights!

www.mainstreetguymon.com



LAT/LONG:

33.8966, -97.89345

Terra, OK 73569

580-437-2600



SOUTHWEST

59. Hobart Farmers Market

In Hobart: Kiowa County Courthouse Square.

Hobart Farmers Market offers a wide array of fresh fruits and vegetables, along with plant materials. Whether you are looking for delicious produce, salad greens, herbs, honey, watermelons, peaches, farm-fresh eggs, meat items, cut flowers or quality Made in Oklahoma products, you must explore this seasonal, open-air market! Open 7:30 a.m. to noon Wed. and Sat., June through Sept.

www.hobartmainst.com



LAT/LONG:

35.02480075,

-99.09303018

Hobart, OK 73651

580-726-5686



NORTHEAST

60. Hoepfner's Kiwi Farm

7 mi. W. of Eufaula on Hwy. 9, then 4 mi. S. on County Rd.

Six acres of hardy kiwis, plus gift area with potted kiwi plants, kiwi glycerin soaps (available in vitamin E, almond oil, Jojoba oil and orange blossom), jasmine and rose soaps, and kiwi mist perfume. Free tours guided year-round. Free admission. Open 8 a.m. to dark daily.



LAT/LONG:

35.23882143,

-95.69855588

Eufaula, OK 74432

918-689-2352



SOUTHEAST

61. HoneyBear Ranch

From Broken Bow: take Hwy. 3 W. for 2.8 mi. At the Fina Gas Station, turn N. & travel 0.9 mi. Our sign is on the L. The sales area is by the big white barn. Watch out for the guineas.

Plants and produce from the farm. Schedule an appointment for a tour of the farm. Check website for hours.

www.honeybear-ranch.com



LAT/LONG:

34.05318811,

-94.77450025

Broken Bow, OK 74728

580-584-6022,

580-306-6020



SOUTHWEST

62. Horn Canna Farm

I-40, Exit 88, then S. on Hwy. 58 approx. 28 mi. to Alfalfa (CR 1240), then E. 1.25 mi. on SSR.

World's largest exclusive canna growers, featuring 28 varieties on about 130 acres. Blooming period is from July to first frost. Annual canna festival held last Saturday in September, with special tours offered. Call ahead for conditions. Group tours available by appointment.

www.cannas.net



LAT/LONG:

35.21866387,

-98.59071819

Carnegie, OK 73015

580-637-2327



NORTHEAST

63. Hungry Holler Art Center

Cottage Gallery features the woodwork of Marc Meng, Zen spoonmaster; the gourd art and botanical castings of Jan Meng; and the work of a carefully selected handful of other fine artists. Visit the wood shop and gourd studio, prowl the gardens and check out the mowed patterns in the pasture. Call for hours and details.

www.hungryholler.com



LAT/LONG:

36.42016, -94.98083

1589 Oklahoma 20

Eucha, OK 74342

918-253-4554



SOUTHEAST

64. Idabel Farmers Market

In Idabel: Located on W. Main.

Idabel Farmers Market offers a wide array of fresh fruits and vegetables, along with plant materials. Whether you are looking for delicious produce, salad greens, herbs, honey, watermelons, peaches, farm-fresh eggs, meat items, cut flowers or quality Made in Oklahoma products, you must explore this seasonal, open-air market! Open 7 a.m. to noon Sat., April through Oct.



LAT/LONG:

33.89497309,

-94.82830624

5 W. Main St.

Idabel, OK 74745

580-286-7608



SOUTHWEST

65. Jahn's Pumpkin Hill

From OKC: Take I-44W, H.E. Bailey Turnpike to Cyril/Fletcher exit. Go 2.25 mi. N., 1 mi. E., 0.25 mi. N. on the W. side of the rd.

We welcome calls from lost drivers! Call from the rd. if we can help: 580-464-3419 or 580-704-4664.

Pumpkin patch offers educational adventure in agriculture on a working farm. Pick pumpkins during October. Enjoy a tractor-pulled farm tour, animals for petting and wide-open spaces. Large groups, please make reservations in advance. Schedule early to secure your preferred date.

www.jahnpumpkinhill.com



LAT/LONG:

34.88756755,

-98.16382076

Cyril, OK 73029

580-464-3419



NORTHEAST

66. Janda Bend Christmas Tree Farm

From Tahlequah: 9 mi. E. on Hwy. 51. Go 0.5 mi. E. of Barren Fork Creek Bridge, then turn NE on McLemore Hollow Rd. Proceed 0.7 mi. to farm on L.

Farm offers Virginia pine, Scotch pine, Leyland cypress and other Oklahoma-grown trees. Opening day is the Friday after Thanksgiving, 10 a.m. to 5 p.m. Normally open 2-5 p.m. Fri., 10 a.m. to 5 p.m. Sat. and 1-5 p.m. Sun. Other times by appointment, or call for availability.

www.jandabendchristmastrees.com



LAT/LONG:

35.91543786,

-94.82485269

26426 E. McLemore

Hollow Rd.

Stilwell, OK 74960

918-207-2404,

918-458-0834



NORTHEAST

67. Jenks Farmers Market

In Jenks: Located at the Green Acres parking lot at 7th and Main, adjacent to Riverwalk Crossing & Oklahoma Aquarium.

Jenks Farmers Market offers a wide array of fresh fruits and vegetables, along with plant materials. Whether you are looking for delicious produce, salad greens, herbs, honey, watermelons, peaches, farm-fresh eggs, meat items, cut flowers or quality Made in Oklahoma products, you must explore this seasonal, open-air market! Open 9 a.m. to 1 p.m. Sat., May through Oct.

www.greeneleafcandles.com



LAT/LONG:

36.02444918,

-95.9592886

Jenks, OK 74037

918-209-5900



NORTHWEST

68. John's Farm

Travel 6.9 mi. S. from the Hwy. 412E & Hwy. 60S jct.; Turn W. on Hwy. 60 and travel one mi. to Vo-Tech Dr.; turn N. on Vo-Tech Dr. and go 0.5 mi. to W. Central Rd. Farm sits on the SE corner of Vo-Tech Dr. and W. Central Rd.

John's Farm represents four generations of farming history. Its goal is to develop a healthy soil and grow healthy plants and animals so consumers can have healthy choices. Certified organic by the Oklahoma Department of Agriculture.

Produces Cattle Tracks Beef, Fairview's Best Organic Whole Wheat Flour and Fairview's Best Organic Wheat Berries.

www.johnsfarm.com



LAT/LONG:

36.2680116,

-98.49582815

201 Vo-Tech Dr.

Fairview, OK 73737

580-227-3452



SOUTH CENTRAL

69. Johnston County Farmers Market in Tishomingo

The Johnston County Farmers Market is a place for consumers to purchase freshly grown fruits and vegetables. The market is a part of the OK Grown network, which ensures the products sold are produced in Oklahoma. Open 8 a.m. to noon Sat., May through Oct.



LAT/LONG:
34.23765743,
-96.67766358
208 N. Kemp Ave.
Tishomingo, OK 73460
580-371-5604



CENTRAL

70. Just Right Alpacas

Call for directions.

Just Right Alpacas is located in the beautiful wooded rolling hills just east of Edmond, providing the ultimate alpaca experience with more than 30 alpacas. Feed and touch these gentle animals and learn the many ways to utilize their luxurious fleece. Picnic on the porch and watch the animals graze. We provide individual or group tours with alpacas, knitting studio and store. We also offer a bed-and-breakfast experience to “be an alpaca rancher” for a day or two. Just let us know your interest, and we will share. Call to schedule a visit.

www.justrightalpacas.com



LAT/LONG:
35.60586, -97.37166
13301 N. Douglas Blvd.
Jones, OK 73049
405-590-5720



SOUTHWEST

71. KS&A Orchards

From Comanche: Take Hwy. 81 S. from Comanche to EW186. Go 2.5 mi. W. Dairy is on the S. side of the road.

From the Hwy. 81 & Hwy. 53 jct. in Comanche: Take Hwy. 53 W. 2.2 mi. to NS280. Go S. 2.9 mi. Turn W. & go 0.5 mi. Dairy is on the S. side on the rd.

Grade-A sheep dairy where East Friesian sheep produce rich milk converted into sheep milk bleu cheese. Cheese-processing plant and other sheep products available, including summer sausages, snack sticks and 11 fragrances of ewe-phoria sheep milk soap. Also home to 2,000 pecan trees. Call ahead to make an appointment.

www.ewe-phoria.com



LAT/LONG:
34.31850248,
-98.00850858
Comanche, OK 73529
580-475-7815,
580-439-2751



SOUTHWEST

72. Lavender Valley Acres

From Apache: At the T-stop on the N. end of town (hwy. 19, 62 & 281), turn W. & go 4.25 mi. on Hwy. 19, turn N. on Tar Rd. (CS 2550), go 5 mi. Turn W. on gravel rd. (CR 1410) & go 0.75 mi.

Walk through lavender garden, browse gift shop for lavender soaps, lotions, culinary lavender products, and watch exotic peacocks on the grounds. Open to public and school groups 9 a.m. to 4 p.m. Wed. to Sun., mid-March through mid-July, or call ahead to schedule appointment.

www.lavendervalleyacres.com



LAT/LONG:
34.97118506,
-98.45898432
Apache, OK 73006
580-588-2855



SOUTHWEST

73. Lawton Farmers Market

In Lawton: Located at the Comanche County Fairgrounds.

Lawton Farmers Market offers a wide array of fresh fruits and vegetables, along with plant materials. Whether you are looking for delicious produce, salad greens, herbs, honey, watermelons, peaches, farm-fresh eggs, meat items, cut flowers or quality Made in Oklahoma products, you must explore this seasonal, open-air market! Located at the Comanche County Fairgrounds. Open 8 a.m. to 1 p.m. Wed. and Sat., May through Oct.

www.swokgrowers.org



LAT/LONG:

34.59886, -98.42189

920 S. Sheridan Rd.

Lawton, OK 73501

580-355-1176



NORTHEAST

74. Lendonwood Gardens

(From Tulsa) Take I-44E to the Afton exit & turn R. At the Buffalo Ranch intersection turn L. onto Hwy. 59. The 1st traffic signal is at Leisure Rd. Turn R. on Leisure Rd. Follow the rd. to the stop sign on Har-Ber Rd. Turn R. Lendonwood Gardens is on the R., approx. 150 feet.

Expansive garden contains more than 1,200 different plants. Rare plants and trees in four landscaped sections, complete with ponds and waterfalls. Includes English terrace, Japanese garden and extensive display gardens. Tours available. Open every day, all year, during daylight hours.

www.lendonwood.com



LAT/LONG:

36.58299, -94.78566

1308 W. 13th St.

Grove, OK 74344

918-786-2938



SOUTHEAST

75. Lil Glad's Farm 'n Pumpkin Patch

Take Hwy. 9, 5.5 mi. W. of Whitefield. Turn N. at CR 4312 for 0.75 mi. Farm is on the L.

U-pick pumpkins and farm-grown gourds. Play games and pick a pumpkin on the farm.



10084 N. County Rd. 412

Stigler, OK 74462

405-694-8746



NORTHEAST

76. Linnaeus Teaching Gardens

Demonstration/teaching garden in Woodward Park, staffed by well-trained volunteers. During regular hours, garden is free and open to the public. No pets. Open 9 a.m. to 4 p.m. Tues. to Fri., 9 a.m. to 5 p.m. Sat. and 1-5 p.m. Sun. through the summer. For other seasonal hours, call 918-746-5125.

www.tulsagardencenter.com/htdocs/lgc/index.htm



LAT/LONG:

36.12991, -95.97253

2435 S. Peoria Ave.

Tulsa, OK 74114

918-746-5136,

918-746-5125



NORTHEAST

77. Livesay Orchards

From Tulsa: From Broken Arrow Expwy., take last free exit, Hwy. 51 (Coweta). At Coweta, take Hwy. 51B towards Porter. Watch for Livesay Orchards signs.

Or, from Muskogee Turnpike E., Take Exit 19 S. and follow Livesay Orchards signs.

From the E. (do not use Muskogee turnpike – no exit ramp): Take Hwy. 69 onto 51B, heading W. to Porter. At Porter, turn S. at Belaire St. (413th E. Ave.) & follow the Livesay Orchards signs.

Peach orchard and farmers market sells homegrown peaches, watermelons, apples, pumpkins, fruits and vegetables, jams, dressings, honey and sorghum. Open 8 a.m. to 6 p.m. Mon. to Sat., plus Sun. afternoons, mid-June through Oct. Pumpkin Playland and hayride available 8 a.m. to 6 p.m. Mon. to Sat., plus Sun. afternoons. Call for availability.

www.livesayorchards.com



LAT/LONG:

**35.82741801,
-95.54068079
39232 E. 231st. St. S.
Porter, OK 74454
918-483-2102**



NORTHEAST

78. Living Kitchen Farm & Dairy

Living Kitchen is located between Bristow & Stroud on historic Rt. 66.

Small artisanal goat milk dairy and farm on 400 acres offering customers fresh raw goat milk, cheeses, eggs and seasonal vegetables. Enjoy farm-to-table dinners in beautiful turn-of-the-century log cabin in the spring and summer. Call in advance for appointments and reservations.

www.livingkitchenfarmanddairy.com



LAT/LONG:

**35.79922189,
-96.53024296
25198 S. 481st. W. Ave.
Depew, OK 74028
918-284-8169**



SOUTHWEST

79. Main Street Farmers Market Mangum

In Mangum: Greer County Courthouse Square.

Main Street Farmers Market in Mangum offers a wide array of fresh fruits and vegetables, along with plant materials. Whether you are looking for delicious produce, salad greens, herbs, honey, watermelons, peaches, farm-fresh eggs, meat items, cut flowers or quality Made in Oklahoma products, you must explore this seasonal, open-air market! Open 4-6 p.m. Wed. 9 a.m. to noon Sat., June through Sept.

www.mangummainstreet.com/index.html



LAT/LONG:

**34.87355724,
-99.50576907
Mangum, OK 73554
580-782-3770**







SOUTHEAST

80. Maple Creek Berry Farm

From Hwy. 59, take Poteau Scenic Bypass to Pleasant Valley Rd. exit. Go W. on Pleasant Valley Rd. approx. 2 mi. to the farm.

U-Pick blueberry farm in beautiful hillside setting. Buckets and take-home containers provided. Open in 6-8 p.m. Tues. and 7-11 a.m. Sat. through summer.

www.oklahomablueberries.com



LAT/LONG:

35.03769943,

-94.66429119

33423 Pleasant Valley Rd.

Poteau, OK 74953

918-658-9139



CENTRAL

81. Martinbird Tree Farm

From OKC: Take I-44 S. to Hwy. 37 (Tuttle/Minco exit). Go W. 5.8 mi. on Hwy. 37. Look for sign on N. side of rd.

Virginia pine, Scotch pine, Austrian pine, Loblolly pine, Colorado blue spruce, Norway spruce, piñon pine and other Oklahoma-grown trees. Choose and cut, balled and burlapped, greenery, retail and wholesale. Free hot chocolate. Open the Friday after Thanksgiving through Christmas Eve. Call for hours/availability.



LAT/LONG:

35.29136, -97.70205

513 Ridgewood Dr.

Tuttle, OK 73089

405-381-2910



NORTHEAST

82. Mayes County Farmers Market in Pryor

In Pryor: Located at Whitaker Park.

Mayes County Farmers Market offers a wide array of fresh fruits and vegetables, along with plant materials. Whether you are looking for delicious produce, salad greens, herbs, honey, watermelons, peaches, farm-fresh eggs, meat items, cut flowers or quality Made in Oklahoma products, you must explore this seasonal, open-air market! Open 8-11 a.m. Sat., May to Sept.



LAT/LONG:

36.30912, -95.31613

Pryor, OK 74361

918-519-0505



SOUTHEAST

83. McAlester Farmers Market

Located at Main & Choctaw in McAlester.

McAlester Farmers Market offers a wide array of fresh fruits and vegetables, along with plant materials. Whether you are looking for delicious produce, salad greens, herbs, honey, watermelons, peaches, farm-fresh eggs, meat items, cut flowers or quality Made in Oklahoma products, you must explore this seasonal, open-air market! Open 9 a.m. to 2 p.m. Tues., Thurs. and Sat. from May to Nov.

www.oces.okstate.edu/pittsburg



LAT/LONG:

34.93201373,

-95.77015009

3 S. Main St.

McAlester, OK 74501

918-423-4120



SOUTHWEST

84. McLemore Pumpkin Farm

From OKC: Take Exit 88 (Hydro/Carnegie) to Hwy. 58 & go S. 14 mi. to Hwy. 152. Turn W. & go 4 mi. to NS 244. Turn N. & go 1 mi.

Live working farm offering a variety of farm animals, a maze and pick-your-own pumpkins. Call to set up a time to visit. Open: Sept. 15 through Oct. 31.

www.mclmorepumpkinfarm.com



LAT/LONG:

35.32953028,

-98.64769229

Colony, OK 73021

405-929-7328



NORTHEAST

85. Meadow Blackberry Farm

Take Hwy. 117 (Taft St.) in Sapulpa E. to Pioneer St. Turn L. onto Pioneer and then L. on Westgreen Way. The farm is at the end of the road, straight ahead.

Meadow Blackberry Farm sits in the heart of Sapulpa. The farm is excited to have its first berry crop this year. The farm features 2,000 Natchez and other blackberry plants and wide rows for easy picking. Come pick at the farm June and July as supplies last.

www.facebook.com/#!/pages/meadow-blackberry-farm/743368605688942?fref=ts



LAT/LONG:

35.99429, -96.06088

3200 Westgreen Way

Sapulpa, OK 74066

918-227-1987



NORTHEAST

86. Muldrow Farmers Market

E. on I-40, Exit 321, L. 0.25 mi. to stoplight. City park & farmers market are on the L.

The Muldrow Farmers Market offers a wide variety of fresh, locally grown vegetables. Conveniently located under the City Park Pavilion. Walking trail and playground available. All produce is limited to \$1 per pound.

www.muldrowcco.cherokee.org



LAT/LONG:

35.40151, -94.59986

Muldrow, OK 74948

479-221-8482



NORTHEAST

87. Muskogee Farmers Market

In Muskogee: Located at 5th & Okmulgee, in front of Civic Center.

Muskogee Farmers Market offers a wide array of fresh fruits and vegetables, along with plant materials. Whether you are looking for delicious produce, salad greens, herbs, honey, watermelons, peaches, farm-fresh eggs, meat items, cut flowers or quality Made in Oklahoma products, you must explore this seasonal, open-air market! Open 8 a.m. to 1 p.m. Wed. starting May 1, and 8 a.m. to noon Sat. starting April 20.



LAT/LONG:

35.74873017,

-95.37396793

Muskogee, OK 74401

918-686-6939

918-360-2012



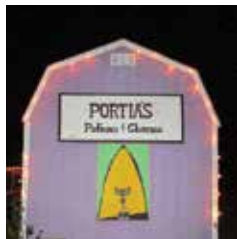
CENTRAL

88. Mustang Kiwanis Farmers Market

Mustang Kiwanis Farmers Market offers a wide array of fresh fruits and vegetables, along with plant materials. Whether you are looking for delicious produce, salad greens, herbs, honey, watermelons, peaches, farm-fresh eggs, meat items, cut flowers or quality Made in Oklahoma products, you must explore this seasonal, open-air market! Open 8-11 a.m. Sat. and 6-8 p.m. Wed., May through Aug.



LAT/LONG:
35.39121, -97.73354
470 W. Oklahoma 152
Mustang, OK 73064
405-818-4721



NORTHEAST

89. Newman Farm

Traveling E. on I-44, take the Stroud-Drumright exit (179). Follow Hwy. 99 N. for 18 mi. to a "T" in the hwy. Turn E. on Hwy. 33/Hwy. 99 and follow the Hwy. 99 signs around Drumright to the next "T". Hwy. 99 turns N., follow it N. for 1 mi. to W. 101st & turn E. onto 101st for 0.5 mi. to entrance.

Traveling W. on I-44, take the Kellyville-Drumright exit (211). Follow Hwy. 33 E. for 20 mi. to the intersection of Hwy. 33/Hwy. 99/Hwy. 16 on the E. edge of Drumright. Turn N. on Hwy 99 for 2 mi. to 101st. Turn E. on 101st for 0.5 mi. to entrance. From Drumright, the farm is located 2 mi. N. on Hwy. 99, then 0.5 mi. E. on W. 101st St. There is an accurate map on the website; Other Internet maps are inaccurate. Watch for the World War II searchlight 7-10 p.m. each night.

Visit **Scream Country Haunted Forest**, an evening haunted walking trail 1 mile in length, a 4,000-square-foot haunted arch-top barn, The Night of the Scarecrow Corn Maze, and the Made-in-Oklahoma Boo Country Village Food and Gift Area. Check website or call for details on days, hours and admission.
www.screamcountry.com



LAT/LONG:
36.01754494,
-96.57245973
51853 W. 101st. St. S.
Drumright, OK 74031
918-607-3327



NORTHEAST

90. Newsome Community Farms

Take 75 N. to 56th St. N. & turn R. It's the 4th property on the S. side.

Newsome Community Farms is an educational food system development organization teaching sustainable approaches to food security. Tours at the farmers market and by appointment.



LAT/LONG:
36.23505897,
-95.95310712
2620 E. 56th. St. N.
Tulsa, OK 74130
918-955-8559



CENTRAL

91. Noble Farmers Market Inc.

In Noble: S. on Hwy. 77 through downtown Noble. The market is on the W. side of Main St.

Noble Farmers Market offers a wide array of fresh fruits and vegetables, along with plant materials. Whether you are looking for delicious produce, salad greens, herbs, honey, watermelons, peaches, farm-fresh eggs, meat items, cut flowers or quality Made in Oklahoma products, you must explore this seasonal, open-air market!



LAT/LONG:
35.1357052,
-97.3951123
304 S. Main St.
Noble, OK 73068
405-872-0100



CENTRAL

92. Norman Farmers Market

I-35 to Robinson St.; Turn E. on Robinson & go 3.25 mi. to the corner of Finley & Robinson. Go 1 block E. to the stop light. Turn N. into the Cleveland County Fairgrounds.

Indoor and outdoor farmers market – and the oldest farmers market in the state! The Norman Farmers Market offers a wide array of fresh fruits and vegetables, along with plant materials. Whether you are looking for delicious produce, salad greens, herbs, honey, watermelons, peaches, farm-fresh eggs, meat items, cut flowers or quality Made in Oklahoma products. Open 4-8 p.m. Wed. and 8 a.m. to noon Sat., April through Oct.

www.clevelandcountyfair.org/farmmarket.html



LAT/LONG:
35.23357033,
-97.43698723
615 E. Robinson St.
Norman, OK 73701
405-360-4721



NORTHEAST

93. Nowata County Farmers Market

Located 1 mi. E. of Hwy. 169 on Nowata County Fairgrounds.

A farmers market whose mission is to develop all avenues of agriculture in Nowata County. Offers vegetables, fruits, meats, eggs, honey, cut flowers, firewood, pumpkins, fall décor, value-added products and Oklahoma-related crafts. Monthly giveaways, classes and workshops. Monthly newsletter full of gardening tips, recipes, recycling ideas, crafts, homemaking tips, sustainability and ag for kids. Open 8 a.m. to noon Sat., May through Oct., and 4-6 p.m. Wed., June through July.

www.nowatacountyfarmersmarket.blogspot.com



LAT/LONG:
36.69192328,
-95.63174268
Nowata, OK 74048
918-214-3000



SOUTHEAST

94. Octavia Organics

Turn W. off Hwy. 259 onto Hwy. 144 W., traveling approx. 1.3 mi. Make a L. turn onto Cemetery Rd. The driveway is the first on the L. Drive past barns to the garden in back.

A family operation raising and selling all natural fresh produce. Call for appointment or availability.

www.nowatacountyfarmersmarket.blogspot.com



LAT/LONG:
34.52162, -94.70829
2614 Red Oak Rd.
Octavia, OK 74957
580-306-3724,
580-244-7408,
580-244-3819



NORTHWEST

95. Okeene Farmers Market

Okeene Farmers Market offers a wide array of fresh fruits and vegetables, along with plant materials. Whether you are looking for delicious produce, salad greens, herbs, honey, watermelons, peaches, farm-fresh eggs, meat items, cut flowers or quality Made in Oklahoma products, you must explore this seasonal, open-air market! Open 5-7 p.m. Tues. and 8-11 a.m. Sat., June through Oct.



LAT/LONG:
36.11578, -98.31754
110 E. Main St.
Okeene, OK 73763



CENTRAL

96. Oklahoma Food Co-Op Farmers Market

Oklahoma Food Co-Op Farmers Market offers a wide array of fresh fruits and vegetables, along with plant materials. Whether you are looking for delicious produce, salad greens, herbs, honey, watermelons, peaches, farm-fresh eggs, meat items, cut flowers or quality Made in Oklahoma products, you must explore this seasonal, open-air market! Open 9 a.m. to 2 p.m. Sat.



LAT/LONG:
35.46277, -97.53348
311 S. Klein Ave.
Oklahoma City, OK
73101



NORTHEAST

97. Okmulgee Farmers Market

In Okmulgee, W. onto 6th St., 8 blocks to Creek Council House Museum, W. lawn.

The Okmulgee Farmers Market is located under the magnificent shade trees on the west lawn of the historic Creek Council House Museum in the heart of downtown Okmulgee. It has brought back to life an important business for the city that had been missing since 1926. Come meet the local farmers and market gardeners and enjoy fresh foods every week. Open 8 a.m. to 1 p.m. Tues. and Fri., May through Oct.

www.okmulgeonline.com/mainstreet/farmer_s_market.html



LAT/LONG:
35.62296421,
-95.97261168
100 W. 6th St.
Okmulgee OK 74447
918-758-1015



CENTRAL

98. Orr Family Farm

From I-35: Take Exit 116 (in Moore) & go W. to Western (approx. 2 mi.). Turn R., go 0.5 mi. to the farm.

From I-240: Take Western Exit 2A; go S. past 134th St.

106-acre working horse farm offers children and visitors of all ages farm activities, including two trains, fishing ponds, a 1974 carousel, an animal barn, pumpkins in the fall, pony and hay rides, a maze, two giant jumping pillows and zip lines. Concessions and group meals available. Call or view website for details.

www.orrfamilyfarm.com



LAT/LONG:
35.32428142,
-97.52981119
14400 S. Western Ave.
Oklahoma City, OK
73170
405-799-3276



NORTHEAST

99. Osage Hills Farmers Market in Skiatook

The Osage Hills Farmers Market setting is in the restored historic Alamo Hotel, which was a luxury hotel during the turn-of-the-century oil boom days. Now, it hosts farmers market vendors with produce and crafts and includes refreshments and music. It is more than a market – it is an event! Open 8 a.m. to noon Sat., June through Sept.

www.osagehillsfarmersmarket.com



202 E. Rogers Blvd.
Skiatook, OK 74070
918-510-0032,
918-384-8835



CENTRAL

100. OSU-OKC Farmers Market

In OKC: Located at the OSU-OKC campus horticulture pavilion.

Open Saturdays year-round at the OSU-OKC campus Horticulture Pavilion. The OSU-OKC Farmers Market offers a wide array of fresh fruits and vegetables, along with plant materials. Whether you are looking for delicious produce, salad greens, herbs, honey, watermelons, peaches, farm-fresh eggs, meat items, cut flowers or quality Made in Oklahoma products, you must check out this market! Open 9 a.m. to 1 p.m. Wed., May 15 through Oct.; 8 a.m. to 1 p.m. Sat., April 6 through Oct.; and 10 a.m. to 1 p.m. Sat., mid-Oct. through mid-April.

www.osuokc.edu/farmersmarket



LAT/LONG:

35.47379346,
-97.58265073

400 N. Portland Ave.
Oklahoma City, OK
73107
405-945-3358



CENTRAL

101. OSU Stillwater Farmers Market

In Stillwater: Located at the Student Union Plaza on the OSU campus.

Find fresh produce and Made in Oklahoma products at the OSU farmers market. Open 9 a.m. to 1 p.m. Thurs., Aug. 14 through Oct. 23.

www.dining.okstate.edu



LAT/LONG:

36.12028, -97.06762
Stillwater, OK 74078
405-744-4424



CENTRAL

102. Our Field of Dreams Alpaca Ranch

E. of Shawnee on I-40 to the Earlsboro exit. Go S. 3 mi. to 4-way stop and turn L. on Hwy. 3E. When hwy. curves to the S., turn L. on 99A. It is the 1st house on the L. (white vinyl fence & brick entry).

Our Field of Dreams Alpaca Ranch is on 65 rolling acres in central Oklahoma, just minutes south of I-40, about 40 min. E. of Oklahoma City. The farm features 200 huacaya alpacas. We have a wide variety for every interest, be it show, breeding or fiber. Also, our alpaca showroom displays products made from alpaca. Call to schedule a tour or a farm visit.

www.ourfieldofdreamsalpacas.com



LAT/LONG:

35.33313898,
-96.77925745
49300 Oklahoma 99A
Earlsboro, OK 74840
405-273-9234,
405-202-9967



NORTHEAST

103. Owasso Farmers Market

From Hwy. 169, turn W. on 76th St. N., then at 1st light (Owasso Expwy.), turn N. (R.). We are just up the road 3 blocks on the W. (L) side of the street (at the YMCA).

Seasonal farmers market promoting food with a face, a place and taste in the Owasso area. Open 8 a.m. to noon Wed. and Sat., May through Oct.

www.owassofarmersmarket.com



LAT/LONG:

36.27205067,
-95.84851511

8300 N. Owasso
Expressway
Owasso, OK 74055
918-521-7191



NORTHEAST

104. Owasso Tree and Berry Farm

From Tulsa: Hwy. 169 N. to 106th St. N. exit, turn W. to first stop sign (129th E. Ave.), turn R., first house on R.

Choose and cut Virginia pine and pre-cut trees including noble fir, grand fir, Douglas fir, Fraser Fir and Nordham fir. Wreaths, greenery, a gift shop, hay rides, free hot cider for everyone and candy canes for the kids available. U-Pick blackberries available in season (usually June), with pails and cartons provided. Call for details, days and hours.

www.owassochristmastreefarm.com



LAT/LONG:

36.31270107,
-95.83008134

11039 N. 129th
E. Ave.
Owasso, OK 74055
918-272-9445



CENTRAL

105. Parkhurst Ranch

Located 8 mi. E. of I-35, go E. on Hwy. 66 to Hiawasse Rd., turn R. 1 mi. to 2nd/178th St., turn L. and look for the big orange pumpkin sign.

Activities include hay wagon rides, a hay bale maze, a hay fort, picking organic native pecans, buying other homegrown produce, picking out a pumpkin at Halloween, a tree swing, catch-and-release fishing in the kids' pond, and a petting zoo with goats, geese, rabbits, horses and tame opossum. Groups welcome by appointment. Call for details.

www.parkhurstpumpkinpatch.com



LAT/LONG:

35.65248823,
-97.28755488

720 Henney Road
Arcadia, OK 73007
405-396-0909,
405-315-7392



SOUTHWEST

106. P-Bar Farms

Located on I-40 between Hydro & Weatherford; Exit 84 if coming from the W. or Exit 88 if coming from the E.; Follow Rt. 66 (N. access rd.) for approx. 3 mi. Look for red barns & signs.

More than 100 acres of indoor/outdoor fun. Tour a 12-acre cornfield maze with intricate twists and turns. Pumpkin patch in the fall with petting zoos and hayrides; field trips, group rates. Open 5-10 p.m. Thurs. and Fri., by appointment only Mon. through Wed., 10 a.m. to 10 p.m. Sat., and 2-6 p.m. Sun. Sun, Sept. through Oct.

www.pbarfarms.com



LAT/LONG:

35.5369787,
-98.62343544

Hydro, OK 73048
580-772-4401,
405-556-1069



SOUTH CENTRAL

107. Peach Crest Farm

Located in Stratford, 1 mi. S. of Hwy. 59 on Hwy. 177.

Fresh vegetables, fruits, herbs and the opportunity to pick your own fresh produce. Be a farmhand for a day and come help plant on a transplanter, feed chickens or harvest. We harvest year-round. Reservations necessary. Please call for appointments, special arrangements, days, hours and more details.

www.peachcrestfarm.com



LAT/LONG:

34.86069963,

-96.96612948

10219 U.S. 177

Stratford, OK 74872

405-650-0804,

580-759-3635



SOUTH CENTRAL

108. Peach Tree Farms

Roadside stand selling peaches, nectarines and blackberries fresh from on-location orchard. Taste peach ice cream and purchase other local produce, jams, jellies and salsas. Open 9 a.m. to 6 p.m. Mon. to Sat., June through Aug.



LAT/LONG:

34.8906195,

-96.89086411

6476 Oklahoma 3 W.

Ada, OK 74820

580-759-3784



NORTHEAST

109. Pearl Farmers Market

In Tulsa: Located at Centennial Park at 6th & Peoria.

Pearl Farmers Market offers a wide array of fresh fruits and vegetables, along with plant materials. Whether you are looking for delicious produce, salad greens, herbs, honey, watermelons, peaches, farm-fresh eggs, meat items, cut flowers or quality Made in Oklahoma products, you must explore this seasonal, open-air market! Open 4-7 p.m. Thurs., April 18 through Sept. 18.

www.pearlfarmersmarket.org



LAT/LONG:

36.1518, -95.97577

610 S. Peoria Ave.

Tulsa, OK 74120

918-346-3748



NORTHEAST

110. Pleasant Valley Farms

From Sand Springs: go W. on 41st St. past Discoveryland to S. 209 W. Ave. Turn L., go 3.2 mi. to 71st St. & turn R. Go 0.6 mi. Farm is on the L. side of the rd.

Christmas trees, pumpkin patch, hay maze, tractor-pulled hay rides, petting zoo, miniature golf, horse-drawn carriage rides on selected dates and a gift shop. Corn maze and haunted corn maze on Friday and Saturday nights in October. Squash festival in October. Call for details, days and hours.

www.pleasantvalleyfarmsok.com



LAT/LONG:

36.06106424,

-96.23967809

22350 W. 71st St. S.

Sand Springs, OK 74063

918-248-5647



NORTHWEST

111. Ponca City Farmers Market

In Ponca City: Located at 14th & Highland at the Pioneer Woman Museum.

Ponca City Farmers Market offers a wide array of fresh fruits and vegetables, along with plant materials. Whether you are looking for delicious produce, salad greens, herbs, honey, watermelons, peaches, farm-fresh eggs, meat items, cut flowers or quality Made in Oklahoma products, you must explore this seasonal, open-air market! Open 4-6 p.m. Tues. and 8-10:30 a.m. Sat., May through Sept.

www.poncacityfarmersmarket.com



LAT/LONG:

36.71045763,
-97.06639369

Ponca City, OK 74601
580-761-2665



CENTRAL

112. Pottawatomie County Farmers Cooperative Market

In Shawnee: Located at Hwy. 177 and Hardesty Rd.

Pottawatomie County Farmers Cooperative Market offers a wide array of fresh fruits and vegetables, along with plant materials. Whether you are looking for delicious produce, salad greens, herbs, honey, watermelons, peaches, farm-fresh eggs, meat items, cut flowers or quality Made in Oklahoma products, you must explore this seasonal, open-air market! Open 8 a.m. to 2 p.m. Wed. and Sat., April through Oct.



LAT/LONG:

35.30508, -96.94789
2321 N. Broadway Ave.
Shawnee, OK 74804
405-830-8109



NORTHEAST

113. Pumpkin Town

From Hwy. 169, take 61st St. S. exit. Turn L. onto 61st St. for 0.5 mi. Turn L. at Garnett. Pumpkin Town is on the NW corner of intersection.

We are a family business and have been providing pumpkins and fun family attractions to the Tulsa area for the past 14 years. During the week, we have two slides, a train, pumpkin launcher, pony and face painting. On the weekends, we also offer a hay ride pulled by draft horses.

www.pumpkintownok.com



LAT/LONG:

36.07636, -95.85121
6060 S. Garnett Road
Tulsa, OK 74133
918-638-4923



SOUTHEAST

114. Rebel Hill Guest Ranch

In Antlers: Follow Hwy. 3 to just before Sportsmans Inn; there will be a "Y" that will curve off to the L. Keep going straight. Continue about 4 mi. out of town. Turn L. at Crossroads Grocery (you'll see our sign). Go around the curve and you'll see our entrance to the L. Come up to the main house.

Working horse ranch with fully equipped 1-3 bedroom cabins with full kitchens and central heat/air (some with wood stoves), all on waterfront. Other activities include horseback riding, fishing and paddleboats, a 15-acre lake, bird-watching and hiking. Gift shop, meeting room and outdoor swimming pool available. Pets allowed.

www.rebelhillguestranch.com



LAT/LONG:

34.21509118,
-95.549728
Antlers, OK 74523
580-271-0061



SOUTHEAST

115. Red Barn Christmas Tree Farm

From McAlester: 6 mi. S. on Hwy. 69 to Savanna, turn E. at Savanna Schools on Jefferson (Brewer Rd.). Go 2.5 mi. on blacktop to Red Barn.

Choose and cut Virginia pine and White pine. Specializing in tall trees and machine-dug trees, wreaths, greenery and gifts, tree stands, ornaments and designer ribbons, and a gift shop. Open noon to 5 p.m. Tues. to Fri., 10 a.m. to 5 p.m. Sat., and noon to 5 p.m. Sun., from Thanksgiving Day until 3 days before Christmas.

www.okchristmastrees.com



LAT/LONG:

34.79391568,

-95.84215871

300 Hickory Bend

McAlester, OK 74501

918-548-3347



CENTRAL

116. Red Silo Productions

Take Hwy. 81 to Choctaw Ave./9th St. Turn & go N. until it dead ends. Turn R. go 1 block to farm entrance.

Features a 10-acre maze, hayrides, corn and pumpkin cannons, a haunted maze, smaller satellite mazes, educational play, bluegrass music, a pick-your-own pumpkin patch, a farm animal display and an antique equipment display. Call ahead for hours of operation.

www.redsilo productions.com



LAT/LONG:

35.06886693,

-97.95015512

Chickasha, OK 73018

405-779-6643,

405-532-9419



SOUTHEAST

117. Riggs Family Orchard

1 mi. E. of Spiro, then 1 mi. N. on Orchard Ln. Follow signs.

Riggs Family Orchard offers U-Pick blackberries, raspberries, nectarines, and peaches along with pre-picked produce.

Restroom facilities on-site. Blackberries June 5 to July 15; peaches June 5 to Aug. 10; nectarines June 25 to July 4 and July 20-30. Cash or check only. Open Mon. through Sat.; call for specific hours.

www.riggfamilyorchard.com



LAT/LONG:

35.25507536,

-94.58424153

Spiro, OK 74959

918-962-3719



CENTRAL

118. Rockin' Star Farm

From Stillwater: Head W. on Hwy. 51, turning R. on Redlands Rd. At the intersection of Redlands and Airport, make a R. Farm is on the L. Look for signs.

Pumpkin patch, petting zoo and fun for all ages. Open weekends in October. Visit the last two October weekends and experience the Spooky Trail. Field trips and parties can be scheduled by calling 405-612-0287.

www.rockinstarfarm.com



LAT/LONG:

36.121667, -97.068611

17351 Alamo Road

Stillwater, OK 74076

405-533-MAZE,

405-612-0287



NORTHEAST

119. Roses Inc. Green Country

Off Washington, just east of 91st and Main St. in Broken Arrow.

With more than 5,000 rose bushes in stock, grown by hand in our greenhouse, Roses Inc. Green Country carries the largest variety of rose bushes in the state of Oklahoma for both retail and wholesale. Along with designing and constructing some of Oklahoma's most widely discussed rose gardens, we also provide gardening services for those with roses, which need spraying, pruning and fertilizing.

www.rosesinctulsa.com



LAT/LONG:

36.03199, -95.78157
500 E. Washington St.
Broken Arrow, OK
74011
918-455-7673



CENTRAL

120. Ross Honey Company

The Ross Honey Plant is a honey-processing facility. Our machines uncap, extract and separate honey from beeswax. The honey is then stored in 55-gallon containers. It is brought into our hot room, liquefied and filtered prior to bottling. Thousands come each year for our annual honey festival, held on the first Saturday in December! All visits are by appointment only.

www.facebook.com/cloverbloom



LAT/LONG:

35.31355, -97.9424
109 Bella Ave.
Minco, OK 73059
405-352-4125



CENTRAL

121. Rustic Acres

1.5 mi. N. of Mason School off Hwy. 48. Approx. 17 mi. N. of Okemah.

Spring/summer produce: tomatoes, peppers, lettuce, onions, watermelons, okra, squash, strawberries, blackberries. Fall activities: corn maze, pumpkin patch, fall family fun, barrel train, jumping pillow, hayrides, full concession, gift shop, petting zoo, haunted maze in Oct. Call for days, hours and details.

www.rusticacres.net



LAT/LONG:

35.5809335,
-96.34368908
Mason, OK 74859
918-623-2703,
888-866-2703



NORTHEAST

122. Sand Springs Farmers Market

In Sand Springs: Located at Downtown Triangle Park at Main & Broadway.

Sand Springs Farmers Market offers a wide array of fresh fruits and vegetables, along with plant materials. Whether you are looking for delicious produce, salad greens, herbs, honey, watermelons, peaches, farm-fresh eggs, meat items, cut flowers or quality Made in Oklahoma products, you must explore this seasonal, open-air market! Open 4-7 p.m. Fri., June to Sept.

www.sandspringsok.org/ssfm



LAT/LONG:

36.13956, -96.11015
Sand Springs, OK 74063
918-246-2500



NORTHWEST

123. Santa's Forest Christmas Tree Farm

From I-35 N., take Exit 214; go 10.5 mi. E. on Hwy. 60/Hwy. 77. The farm sits on the S. side of the rd.

Choose-and-cut Christmas tree farm featuring Virginia pine trees. Fresh, decorated wreaths and other craft items available. Complimentary hot cocoa, coffee and cider available for guests. Plan an outing for a family holiday experience.

www.santasforesttreefarm.net



LAT/LONG:

36.68790645,

-97.16576406

Ponca City, OK 74601

580-761-6773,

580-765-9441



CENTRAL

124. Seminole Farmers Market

From the intersection of Hwy. 9/Hwy. 99, go S. 0.5 mi. W. to First United Methodist Church.

Seminole Farmers Market offers a wide array of fresh fruits and vegetables, along with plant materials. Whether you are looking for delicious produce, salad greens, herbs, honey, watermelons, peaches, farm-fresh eggs, meat items, cut flowers or quality Made in Oklahoma products, you must explore this seasonal, open-air market! Open 8 a.m. to noon Tues. and Sat., June through Oct.

www.oces.okstate.edu/seminole



LAT/LONG:

35.24667098,

-96.68030911

910 Wrangler Blvd.

Seminole, OK 74868

405-382-9883



NORTHEAST

125. Shepherd's Cross Incorporated

From Claremore, take Hwy. 66 N. 2.5 mi. from the last spotlight in town; note the sign for Shepherd's Cross; turn R. on EW 45/Akin Rd.; follow the trailblazer signs for Shepherd's Cross; proceed 2.5 mi. Shepherd's Cross is on the R.

Authentic working farm with educational and seasonal tours and events all year, including fiber arts demos/lessons, spinning, weaving and knitting, pumpkin festival, living nativity and pecan festival, and a Made in Oklahoma gift shop. Open 8:30 a.m. to 5:30 p.m. Thurs. to Sat. with seasonal changes; check website or call first.

www.shepherdscross.com



LAT/LONG:

36.36531591,

-95.52797117

16792 E. 450 Rd.

Claremore, OK 74017

918-231-6947,

918-342-5911



NORTHEAST

126. Skedee Farms

4 mi. N. of Pawnee of Hwy. 18 to Skedee turnoff; 5 mi. E. to Skedee Farms.

Family-owned-and-operated U-Pick blackberry farm. Containers are provided and pre-picked berries are available for sale. Bring family or friends for a down-home country experience, as well as fishing for the kids. Call for availability.



LAT/LONG:

36.38505693,

-96.71065742

Pawnee, OK 74058

918-767-2142



CENTRAL

127. Sorghum Mill Christmas Tree and Blackberry Farm

From OKC: N. on I-35 to Exit 143 (Covell Rd.). Turn E. on Covell Rd. to Midwest Blvd. (approx. 1.5 mi.); Turn N. & go 1.75 mi. to Sorghum Mill Rd.; Turn W. on Sorghum Mill Rd. & go 1 mi. to Midwest Ln.; Turn S. on Midwest Ln.; Go 1 block & turn E. into farm.

Choose and harvest Virginia pine, white pine, Scotch pine, Colorado blue spruce, Norway spruce and Dixie fir. Features a variety of pre-cut trees, greenery, free hot chocolate, cider, coffee, candy canes and cookies. Blackberries early June to mid-July. Hours are seasonal; call ahead for availability.

www.christmas-tree.com/real/ok/sorghum/inde



LAT/LONG:

35.70764579,

-97.38689031

7121 Midwest Ln.

Edmond, OK 73034

405-340-5488



CENTRAL

128. Spencer's Orchard and Greenhouses

2 mi. E. of Choctaw on 23rd St., 2 mi. N., 1 mi. E., 0.25 mi. N.

Family owned and operated farm, U-Pick or retail peaches, tomatoes, onions, potatoes, yellow squash, zucchini squash, five types of peppers, okra, watermelons and cantaloupe. Open 8 a.m. to 5 p.m. Mon. through Sat. and Sun. afternoons, June through Aug.



LAT/LONG:

35.52601953,

-97.21217299

5528 N. Peebly Rd.

Harrah, OK 73045

405-454-3471



CENTRAL

129. Stillwater Farmers Market

Stillwater Farmers Market offers a wide array of fresh fruits and vegetables, along with baked goods, plants and more. Four locations open throughout the year; see website for details. Open 8 a.m. to 1 p.m. Wed. and Sat., April through Oct. (309 N. Main St.), and 10 a.m. to 1 p.m. Sat., Nov. through March (1118 W. Hall of Fame Ave.).

www.stillwaterfarmersmarket.com



LAT/LONG:

36.12602851,

-97.05856298

Stillwater, OK 74075

405-385-1086,

405-377-2619



NORTHEAST

130. Stilwell Farmers Market

Located at the Stilwell Public Library, at the corner of W. Division & N. 6th.

Stilwell Farmers Market offers a wide array of fresh fruits and vegetables, along with plant materials. Whether you are looking for delicious produce, salad greens, herbs, honey, watermelons, peaches, farm-fresh eggs, meat items, cut flowers or quality Made in Oklahoma products, you must explore this seasonal, open-air market! Open 8 a.m. to noon Wed. and Sat., mid-April through Oct.



LAT/LONG:

35.81518233,

-94.63311252

5 N. 6th St.

Stilwell, OK 74960

918-696-2329



SOUTH CENTRAL

131. Stratford Pullen Peaches

From Stratford at the 4-way stop: go N. on Hwy. 177 for 3 mi. Turn L. (W) and go 2/3 mi. It's the second house on the R. with a white fence and sign for Lazy P Farm.

Stratford peaches have always been known for their great taste. Stop by Pullen Peaches in Stratford for some tasty goodness.

www.facebook.com/pullenpeaches



LAT/LONG:

34.84019, -96.97438

Stratford, OK 74813

580-421-5152,

580-759-3164



NORTHEAST

132. Swan Brothers Dairy Inc.

From I-44 Exit 255 (Claremore), turn L. after toll booth onto Hwy. 20 for 1 block, then turn R. on Maiden Ln.

Dairy farm with a retail store offering milk and cheese products. Visitors can view milking of dairy cows 3-5 p.m. daily. Open 8 a.m. to 6 p.m. Mon. through Sat.



LAT/LONG:

36.30860913,

-95.5969432

938 E. 5th St.

Claremore, OK 74017

918-341-2298



NORTHEAST

133. Tahlequah Farmers Market

In Tahlequah: Located at Norris Park, at Muskogee Ave. & Morgan Ave., near Northeastern State University.

Seasonal farmers market offering the best selection of local fruits and vegetables, baked goods, fresh herbs, grass-fed beef and more. Open 8 a.m. to noon. Sat., April through Oct.

www.tahlequahfarmersmarket.com



LAT/LONG:

35.89076843,

-94.97405212

Tahlequah, OK 74464

918-207-7671



SOUTHEAST

134. Talihina Farmers Market

Located at 1st & Dallas in downtown Talihina.

Fresh local grown fruits and vegetables, hand-crafted items from the farm, local goat milk and cheese. Open 8 a.m. to 1 p.m. Wed. and Sat., May through Oct.

www.talihinamarket.com



LAT/LONG:

34.75264812,

-95.04905175

400 2nd St.

Talihina, OK 74571

918-429-9925



NORTHEAST

135. Tallgrass Prairie Preserve

From downtown Pawhuska: drive N. on Kiheka, at the intersection of Hwy. 60 (at the corner of the triangle-shaped building), follow signs to the preserve headquarters (approx. 18 mi.).

39,000-acre preserve offers a 50-mile scenic drive with four scenic turnouts and picnic locations. Home to more than 300 bird species. Other wildlife includes bison, white-tailed deer, bobcats and more. A self-guided nature trail, 2-mile hiking trail and 1920 bunkhouse also are available. Open daily, dawn to dusk.

www.nature.org/oklahoma



LAT/LONG:

36.7415979,
-96.3637892

100 W. Main St.
Pawhuska, OK 74056
918-287-4803



CENTRAL

136. T.G. Farms

Newcastle location: From OKC, take I-44 W. to Hwy. 37 (Exit 108). Go 1 mi. W.; Located on S. side of Hwy. 37.

Norman location: Take I-35 S. to Hwy. 9 (Exit 106); Go 1.5 mi. W.; Farm is on N. side of Hwy. 9.

Greenhouse/nursery with bedding plants, shrubs and produce. In summer, canned butters, jellies, preserves, salsas and pickled veggies; In fall, pumpkin patch, corn maze, hay maze, large round-bale maze, hay rides, U-Pick pumpkins. Farm animals, fish pond, picnic area and concessions also available. Call for details.

www.tgfarms.com



LAT/LONG:

35.29080982,
-97.61760735

Newcastle, OK 73065
405-387-3276



NORTHEAST

137. The Bivin Garden

0.25 mi. W. of Shidler on the S. side of the rd.

Six acres of sculpted gardens and landscaping, a variety of ornamental ponds and rock gardens with rocks from around the world, more than 75 varieties of roses, guided tours with gardening tips, picnic areas, bird-watching areas and a cottage gift shop. Open 10 a.m. to dusk on weekends and weekdays by appointment May through Sept.

www.thebivingarden.com



LAT/LONG:

36.78191, -96.67068

500 W. 1st St.
Shidler, OK 74652
918-793-4011



NORTHEAST

138. The Crooked Little House

Located just 6 mi. from the Totem Pole Park near Foyil. From I-44, take Hwy. 28 Exit 269 (Adair) & go E. approximately 0.5 mi.

We offer a variety of pecans and other nuts, which can be bought by the pound or pre-packaged, as well as candies, candles and other gifts, such as fudge, pecan pies and brittles. Shipping available, credit cards accepted, handicapped-accessible. Summer hours are 10 a.m. to 6 p.m. Wed. through Sat.

www.thecrookedlittlehouse.com



LAT/LONG:

36.43776938,
-95.36943687

6315 Oklahoma 28 W.
Adair, OK 74330
918-785-2287



NORTHWEST

139. The Menagerie – Bradt's Mammals and More LLC

From Alva: Go 3 mi. W. on Hwy. 64. Farm is located on N. side of rd. between CR 390 & CR 400.

The Menagerie is a hands-on, interactive petting zoo designed to provide entertainment and learning in a not-so-average farm atmosphere. While you will see animals associated with your typical farm, you will also have the opportunity to pet and feed zebras, llamas, a camel and more! When you visit, you never know what new addition we'll have. Whether you're looking for a fun outing with the family, an educational field trip for your class or a birthday party destination, The Menagerie is the perfect place.

www.bradtsmenagerie.com



LAT/LONG:

36.79782, -98.74229

Alva, OK 73717

580-430-1978,

580-430-1295



NORTHEAST

140. The Nuthouse

3 mi. E. of Catoosa on old Hwy. 66.

A fun place to shop for pecans and nuts of all types. Select gourmet foods, seasonings, candles, souvenirs and unique gifts. Delicious homemade fudge, cookies, a wide variety of candy-coated nuts, homemade jams and jellies available.

Now serving food daily. Open 10 a.m. to 6 p.m. Mon. to Sat.

www.route66nuthouse.com



LAT/LONG:

36.22782912,

-95.69993913

26677 S. Oklahoma 66

Claremore, OK 74019

918-266-1604,

888-732-2665



NORTHEAST

141. The Peach Barn & Orchard

Located on the SW corner of Hwy. 51B & Hwy. 69 jct.

Homegrown peaches and a line of fruits, vegetables, bakery items, peach fried pies, peach ice cream, crafts and quilts.

Open June through Christmas: 9 a.m. to 6 p.m. Mon. to Sat. and noon to 6 p.m. Sun. in the summer; 9 a.m. to 6 p.m. Mon. to Sat., Sept. through Oct.; 9 a.m. to 5 p.m. Mon. to Sat., Nov. through Dec. 22; closed the Sun. after Labor Day.

www.thepeachbarn.com



LAT/LONG:

35.8382367,

-95.40369996

Porter, OK 74454

918-686-0440



NORTHEAST

142. The Peppermint Dragon

From Hwy. 117, turn S. on Heywood Hill Rd. Going S. to 131st St. Turn R. heading W. 0.5 mi. to Dugan's Rd. Going S. 0.2 mi. to 133rd, turn R. & L. up our driveway.

With 40 years of gardening experience, The Peppermint Dragon specializes in herbs in greenhouses, with additional emphasis on tomatoes and peppers. However, the farm is shifting from food production to gourd production. Ask about our gourd art, woodburning and painting of gourds.

www.localharvest.org



LAT/LONG:

35.9714, -96.08065

7920 W. 133rd St. S.

Sapulpa, OK 74066

918-224-5337



NORTHEAST

143. The Tulsa Maize

From the Broken Arrow Expwy., take 71st/Kenosha 8 mi. E. to 321st E. Ave. Turn L. on 321st E. Ave. Turn R. on 61st. Follow the signs.

Cornfield maze and other attractions, including a cow train, hayrides, a hay jump, mini-mazes and a corn box. Open for field trips 10 a.m. to 3 p.m. Tues. to Fri. by appointment or reservation only. Open to the public 5-10 p.m. Wed. to Fri., 10 a.m. to 10 p.m. Sat, and noon to 6 p.m. Sun., late Sept. to early Nov. Check website for updates.

www.tulsamaize.com



LAT/LONG:

36.07525291,
-95.61422358
32506 E. 61st. St.
Broken Arrow, OK
74014
918-232-4299



NORTHEAST

144. Thunderbird Berries

Call for directions and availability.

Thunderbird Berries offers U-Pick blueberries, blackberries, strawberries and raspberries, as well as farm-fresh eggs and honey. Open May through Aug.; call ahead for availability. Picking times are 7 a.m. to noon Tues., Thurs. and Sat.

www.facebook.com/thunderbirdberryfarm



LAT/LONG:

36.0560302,
-95.6186958
7515 S. Hansen Road
Broken Arrow, OK
74014
918-640-7168,
918-704-3795



CENTRAL

145. TimberLake Farms Alpaca Farm

We offer alpaca sales, breeding, agistment (boarding), on-farm/telephone consultations and educational seminars across the country. Located in a beautiful wooded hill area of central Oklahoma. Please call ahead for hours and availability.

www.timberlakefarms.net



LAT/LONG:

35.72532427,
-97.32726952
12001 E. Waterloo Road
Arcadia, OK 73007
405-341-8444,
405-550-3023



CENTRAL

146. Tuttle Farmers Market

Located in downtown Tuttle.

Tuttle Farmers Market offers a wide array of fresh fruits and vegetables, along with plant materials. Whether you are looking for delicious produce, salad greens, herbs, honey, watermelons, peaches, farm-fresh eggs, meat items, cut flowers or quality Made in Oklahoma products, you must explore this seasonal, open-air market! Open 7:30-11 a.m. Sat., May through Aug.



LAT/LONG:

35.29092, -97.81599
Tuttle, OK 73089
405-381-0324



NORTHEAST

147. Twin Arrows Buffalo Market

Located in Adair off S. Hwy 69.

Market offers a wide range of quality buffalo, elk and venison meat for sale, including steaks, roasts, burger, jerky and many other cuts, along with pecans and an array of gifts and Native American products. Open 10 a.m. to 5 p.m. Mon. to Sat.

www.windsongadventures.com



LAT/LONG:

36.43333492,

-95.27284161

308 S. Mayes St.

Adair, OK 74330

918-785-5695



CENTRAL

148. Valley View Pecan Company

From Earlsboro exit on I-40, located 3 mi. S. off the interstate on the W. side of the rd.

Valley View Pecan Company offers a variety of pecan and nut products that can be purchased in our retail store or at the OSU-OKC Farmers Market. Valley View specializes in papershell pecan halves, but also has cinnamon/sugar pecans, fudge and more.

www.valleyviewpecans.com



LAT/LONG:

35.33626254,

-96.80730872

15704 Valley View Rd.

Shawnee, OK 74801

800-842-9411



SOUTHEAST

149. Valliant Farmers Market

Located on Hwy. 70 W. at railroad track.

Valliant Farmers Market offers a wide array of fresh fruits and vegetables, along with plant materials. Whether you are looking for delicious produce, salad greens, herbs, honey, watermelons, peaches, farm-fresh eggs, meat items, cut flowers or quality Made in Oklahoma products, you must explore this seasonal, open-air market! Open 9 a.m. to 5 p.m. Mon. to Sat., June through Aug.



LAT/LONG:

34.00380281,

-95.10091885

912 E. Wilson St.

Valliant, OK 74764

580-212-9210



CENTRAL

150. W6 Pines Christmas Tree Farm

From NE 10th St. and Choctaw Rd., 1/2 mi. E., 1/2 mi. S.

W6 Pines Christmas Tree Farm offers Virginia pine, Scotch pine, container-grown Leyland cypress and wreaths. Choose-and-cut farm. Open the day after Thanksgiving until Christmas Eve., hours are 3-6 p.m. Mon. to Fri., 9 a.m. to 6 p.m. Sat. and 1-4 p.m. Sun.



LAT/LONG:

35.47416619,

-97.25596106

15600 Kent Dr.

Choctaw, OK 73020

405-390-8635



NORTHEAST

151. Wagoner Farmers Market

Fort Gibson Lake Tourism Center, located in Blake Park at the jct. of Hwy. 51 & Hwy. 69.

Seasonal farmers market featuring local produce, crafts and other miscellaneous items. Open 8 a.m. to 1 p.m. Sat., May through Sept.



LAT/LONG:

**35.95812291,
-95.39523739**

**Wagoner, OK 74467
918-485-4623**



SOUTHEAST

152. Waterfall Creek Pecan Farm

Located 7.5 mi. S. of Idabel on Hwy. 259.

Farm offers pecan sales as whole, cracked or shelled meats in the farm's retail shop. We do retail and wholesale with mail orders available. Open 9 a.m. to 6 p.m. Retail sales available from Oct. to Jan.

www.pecanscook.com



LAT/LONG:

**33.78210712,
-94.8070356**

**Idabel, OK 74745
580-286-6327**



SOUTHWEST

153. Weatherford Farmers Market

In Weatherford: In the old fire station at 118 N. Kansas.

Weatherford Farmers Market presents a small-town community atmosphere on Route 66 and home-grown produce from local farmers. Meet the growers, participate in special venues, experience an "old-time" market in the park and take home luscious forgotten flavors! Open 8 a.m. to noon Sat. and 4-7 p.m. Tues., June through Oct. (during the peak season).

www.facebook.com/weatherfordoklahomafarmersmarket?fref=ts



LAT/LONG:

**35.53113653,
-98.70276086**

**118 N. Kansas St.
Weatherford, OK 73096
580-330-3415**



NORTHEAST

154. West Side Farmers Market

In Tulsa: Located at 25th and Southwest Blvd.

West Side Farmers Market offers a wide array of fresh fruits and vegetables, along with plant materials. Whether you are looking for delicious produce, salad greens, herbs, honey, watermelons, peaches, farm-fresh eggs, meat items, cut flowers or quality Made in Oklahoma products, you must explore this seasonal, open-air market! Open 2-7 p.m. Thurs., May through Oct.

www.redforkmainstreet.org



LAT/LONG:

**36.12706, -96.00679
Tulsa, OK 74157**



SOUTHWEST

155. Wichita Buffalo Company at Sandy Springs Farms LLC

From OKC: Go W. on I-40 to Exit 104; Go S. 7 mi.; Turn E. & go 1.3 mi. The ranch is on the N. side of the hwy.

Interesting and educational tours of farms buffalo herds and management operations. Topics range from buffalo temperament to cooking buffalo meat. Guests can take a tour, see bison on the open rolling prairie and buy buffalo meat from the ranch. Open by appointment.

www.sandyspringsfarms.com



LAT/LONG:

35.42062871,
-98.26707218

Hinton, OK 73047
405-542-6015



NORTHEAST

156. Wild Rose Strawberry Farm

From Adair: at the intersection of Hwy. 69 and Hwy. 28, turn L./W. at the stoplight. Drive 7 mi. Turn L./S. onto 429 Rd. for 1.5 mi. to the farm on the right.

We are a family-based farm. We are a U-pick or you can call ahead and we will have them ready for you. Our open days are Mon., Wed., Fri., and Sat. Call ahead to check availability. We want our customers to have a pleasant experience coming to visit us.

www.wildrosetstrawberryfarm.com



LAT/LONG:

36.41825, -95.36833
7645 N. 429 Rd.

Adair, OK 74330
918-785-2212



SOUTHEAST

157. Wild Things Farm

Located on Hwy. 70 W. at railroad track.

Park-like setting on 90 acres offers two ponds, a large pavilion for group activities, U-Pick fruits and vegetables, a seasonal corn maze and barnyard friends. Check the website for fruit and vegetable ripening calendar, details, days and hours.

www.wildthingsfarm.com



LAT/LONG:

35.303455,
-94.45194972

700 Beaty Ave.
Pocola, OK 74902
918-626-4053



NORTHEAST

158. Wilkinson's Christmas Forest

From Tahlequah: Take Hwy. 82 N. approx. 8 mi. Look for our sign on the L. of the hwy. Turn L. into our driveway at the top of the hill after our sign.

From Locust Grove: Take Hwy. 82 S. approx. 16 miles from the intersection of Hwy. 82 and the Cherokee Turnpike (Hwy. 412). Look for our sign on the R. of the hwy. Turn R. into our drive at the top of the hill after our sign.

Wilkinson's Christmas Forest is located just north of Tahlequah on Hwy. 82. We have been growing and selling Christmas trees for 15 years. We truly love seeing families continue (or start) their family tradition of personally harvesting their Christmas trees. We look forward to seeing old friends and making new ones each Christmas season. Please come out and visit us before you choose a pre-cut tree from a local store. We guarantee that our trees are fresher – because they aren't cut down until you choose the right tree for your REAL Christmas celebration.

www.thewilkinsonchristmasforest.com



LAT/LONG:

35.99281, -95.01357
Tahlequah, OK 74464

918-316-0772,
918-458-7936



CENTRAL

159. Wind Drift Orchards

Wind Drift East is 1/2 mi. E. of Luther Rd. on the S. side of NE 63rd St. Wind Drift West is a half mi. W. of Luther Road on the N. side of NE 50th St.

Wind Drift Orchards consists of two peach and nectarine orchards in Harrah. Wind Drift East has nearly 3,000 producing peach trees split into 12 different varieties. We have recently planted 3,000 more peach trees and 500 nectarine trees, which will begin to produce in the 2016 or 2017 picking season. Wind Drift West has nearly 7,000 peach trees, 600 nectarine trees and 100 plum trees, which gives this orchard 25 varieties of peaches, five varieties of nectarines and two varieties of plums. Peaches will be available to pick from mid-June to early September at both locations. Plums will be available to pick from late July to Early August at Wind Drift West only. Hours are 8 a.m. to 5:30 p.m. Mon. to Sat., 1-5 p.m. Sun. Hours change with availability of fruit. Call ahead to 405-454-6618.

www.winddriftorchards.com



LAT/LONG:

**35.536, -97.18647
19400 NE 63rd St.
& 18499 NE 50th St.
Harrah, OK 73045
405-454-6618**



SOUTH CENTRAL

160. Woodbine Farms Pumpkin Patch

From I-35, take Veterans Blvd. Exit 33 going W. (IHOP exit), Go 2 mi. W. to Kings Rd., Go N. on Kings Rd. for 2.3 mi. & look for the signs.

Pumpkin patch features a hayride, a huge sand pile, a hay maze, picnic tables, a petting zoo, picking your own pumpkin, a covered pavilion, bathroom facilities, an ample parking area and more on the weekend. Seasonal. Call ahead for hours and availability.

www.woodbinefarms.net



LAT/LONG:

**34.23835885,
-97.19555329
5109 Kings Rd.
Ardmore, OK 73401
580-226-4052**



NORTHWEST

161. Woodward Main Street Farmers Market

In Woodward: Located at 18th & Oklahoma, in the parking lot of Bible Baptist Church.

Woodward Farmers Market offers a wide array of fresh fruits and vegetables, along with plant materials. Whether you are looking for delicious produce, salad greens, herbs, honey, watermelons, peaches, farm-fresh eggs, meat items, cut flowers or quality Made in Oklahoma products, you must explore this seasonal, open-air market! Open 7:30 a.m. to noon Sat., March through Dec.

www.woodwardfarmersmarket.com



LAT/LONG:

**36.43478985,
-99.39031153
Woodward, OK 73801
405-823-8295**



NORTHEAST

162. Woolaroc Ranch, Museum & Wildlife Preserve

12 mi. SW of Bartlesville on Hwy. 123.

This 3,600-acre ranch/wildlife preserve/museum once was the country home of oilman Frank Phillips. Includes a world-class collection of western art, a 20-acre garden, a self-guided nature trail and a gift shop. More than 700 animals, including buffalo, elk and longhorn cattle, graze in natural surroundings. Open 10 a.m. to 5 p.m. Wed. to Sun.

www.woolaroc.org



LAT/LONG:

36.64227227,

-96.09590527

1925 Woolaroc
Ranch Rd.

Bartlesville, OK 74003

918-336-0307,

888-966-5276



NORTHEAST

163. Zena Suri Alpacas

From Rt. 59 between Grove & Jay, Follow Rt. 127 W. almost 5 mi. Turn N. on 580 Rd. Ranch is the third property on the L. Enter at Zena Suri sign.

Nestled on 78 rolling acres, our alpaca ranch offers the chance to learn about the soft, gentle Suri alpaca. Watch alpacas roam, touch their fleece, and help feed and care for them. Learn about fleece prep, carding and spinning. Family visits, tours and school field trips welcome. On-site gift shop offers yarn and clothing. Call for an appointment.

www.zenasurialpacas.com



LAT/LONG:

36.50661316,

-94.8451613

35401 S. 580 Rd.

Jay, OK 74346

201-828-8581,

804-389-2579



SOUTH CENTRAL

164. Ziegelmeier & Co. LLC

Located behind Crosspointe Church and the Pontotoc County Technology Center. Exit Oak St. from Hwy 3.

Family-owned manufacturers of Ziegelmeier's Toasted Pecan Butter, an all-natural nut butter made with toasted pecans in Ada. Tours of the facility are available by appointment. Retail area open for purchases 9 a.m. to 5 p.m. Closed daily 2:45-3:45 p.m.

www.ziegelmeiers.com



LAT/LONG:

34.74811, -96.68709

615 W. 33rd St.,

Building E, Suite C

Ada, OK 74820

580-436-9386,

580-399-0676







EXPLORE OKLAHOMA

OklahomaAgritourism.com

Browse more than 400 events, destinations and attractions, including vineyards, museums, country stays, U-Pick farms and more! Plan your next Oklahoma adventure with our easy-to-use interactive map.

Oklahoma Tourism & Recreation

Reference these handy publications to assist in planning a memorable Oklahoma vacation.

OKLAHOMA TRAVEL GUIDE | AGRITOURISM GUIDES AND MAP | OUTDOOR RECREATION GUIDE | ROUTE 66 GUIDE | OKLAHOMA INDIAN COUNTRY GUIDE

TravelOK.com



facebook.com/OKAgritourism



OklahomaAgritourism.com



twitter.com/OKAgritourism



traveler.oklahomaagritourism.com/blog


OKLAHOMA
TRAVELOK.COM


OKLAHOMA'S
GROWING
ADVENTURE

